

3-15-2012

Independent evolution of macrophage-tropism and increased charge between HIV-1 R5 envelopes present in brain and immune tissue

Maria Paz Gonzalez-Perez
University of Massachusetts Medical School

Olivia O'Connell
University of Massachusetts Medical School

Rongheng Lin
University of Massachusetts at Amherst

See next page for additional authors

Follow this and additional works at: <http://escholarship.umassmed.edu/oapubs>

 Part of the [Immunology and Infectious Disease Commons](#), [Virology Commons](#), and the [Virus Diseases Commons](#)

Repository Citation

Gonzalez-Perez, Maria Paz; O'Connell, Olivia; Lin, Rongheng; Sullivan, W. Matthew; Bell, Jeanne E.; Simmonds, Peter; and Clapham, Paul R., "Independent evolution of macrophage-tropism and increased charge between HIV-1 R5 envelopes present in brain and immune tissue" (2012). *Open Access Articles*. 2324.
<http://escholarship.umassmed.edu/oapubs/2324>

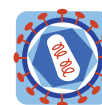
Independent evolution of macrophage-tropism and increased charge between HIV-1 R5 envelopes present in brain and immune tissue

Authors

Maria Paz Gonzalez-Perez, Olivia O'Connell, Rongheng Lin, W. Matthew Sullivan, Jeanne E. Bell, Peter Simmonds, and Paul R. Clapham

Rights and Permissions

© 2012 Gonzalez-Perez et al; licensee BioMed Central Ltd. This is an Open Access article distributed under the terms of the Creative Commons Attribution License (<http://creativecommons.org/licenses/by/2.0>), which permits unrestricted use, distribution, and reproduction in any medium, provided the original work is properly cited.



RESEARCH

Open Access

Independent evolution of macrophage-tropism and increased charge between HIV-1 R5 envelopes present in brain and immune tissue

Maria Paz Gonzalez-Perez¹, Olivia O'Connell¹, Rongheng Lin², W Matthew Sullivan¹, Jeanne Bell³, Peter Simmonds⁴ and Paul R Clapham^{1*}

Abstract

Background: Transmitted HIV-1 clade B or C R5 viruses have been reported to infect macrophages inefficiently, while other studies have described R5 viruses in late disease with either an enhanced macrophage-tropism or carrying envelopes with an increased positive charge and fitness. In contrast, our previous data suggested that viruses carrying non-macrophage-tropic R5 envelopes were still predominant in immune tissue of AIDS patients. To further investigate the tropism and charge of HIV-1 viruses in late disease, we evaluated the properties of HIV-1 envelopes amplified from immune and brain tissues of AIDS patients with neurological complications.

Results: Almost all envelopes amplified were R5. There was clear compartmentalization of envelope sequences for four of the five subjects. However, strong compartmentalization of macrophage-tropism in brain was observed even when brain and immune tissue envelope sequences were not segregated. R5 envelopes from immune tissue of four subjects carried a higher positive charge compared to brain envelopes. We also confirm a significant correlation between macrophage tropism and sensitivity to soluble CD4, a weak association with sensitivity to the CD4 binding site antibody, b12, but no clear relationship with maraviroc sensitivity.

Conclusions: Our study shows that non-macrophage-tropic R5 envelopes carrying gp120s with an increased positive charge were predominant in immune tissue in late disease. However, highly macrophage-tropic variants with lower charged gp120s were nearly universal in the brain. These results are consistent with HIV-1 R5 envelopes evolving gp120s with an increased positive charge in immune tissue or sites outside the brain that likely reflect an adaptation for increased replication or fitness for CD4⁺ T-cells. Our data are consistent with the presence of powerful pressures in brain and in immune tissues selecting for R5 envelopes with very different properties; high macrophage-tropism, sCD4 sensitivity and low positive charge in brain and non-macrophage-tropism, sCD4 resistance and high positive charge in immune tissue.

Keywords: HIV, Envelope, Macrophage-tropism, CD4, CCR5, Neurotropism, Immune tissue, Brain, Entry

Background

Human immunodeficiency virus type 1 requires interactions with CD4 and either CCR5 or CXCR4 coreceptors to trigger fusion of viral and cellular membranes and entry into cells. CCR5-using (R5) viruses are mainly transmitted and individuals homozygous for a defective CCR5 gene ($\Delta 32$ CCR5) are substantially protected from

infection [1]. Recent studies of clade B and clade C transmission events have shown that the transmitted R5 viruses are unable to efficiently infect macrophages, whether transmission is sexual [2,3] or via mother-to-child [4]. In late disease, CXCR4-using (X4) variants can be isolated from up to 50% of AIDS patients and are associated with a more rapid loss of CD4⁺ T-cells and faster disease progression [5-8]. However, whether R5 viruses evolve distinct properties that impact on pathogenesis is poorly understood. R5 viruses with an enhanced macrophage-tropism were isolated from adult

* Correspondence: paul.clapham@umassmed.edu

¹Program in Molecular Medicine and Department of Microbiology and Physiological Systems, University of Massachusetts Medical School, Biotech 2, 373 Plantation Street, Worcester, Massachusetts 01605-2377

Full list of author information is available at the end of the article

[9,10] and pediatric [11] AIDS patients who did not develop CXCR4-using variants. However, our previous data indicated that viruses carrying non-macrophage-tropic R5 envelopes were present in immune tissue (lymph nodes) in late disease, even in subjects with neurological complications who carried highly macrophage-tropic variants in brain tissue [12,13]. Finally, other groups reported that envelopes with an increased positive charge, fitness and reduced sensitivity to CCR5 inhibitors [14-17] evolve in late disease. Whether increased macrophage-tropism and envelope charge are separate or related properties has not been extensively researched, although in a preliminary study, we did not detect a correlation [18]. The current study was designed to investigate the relationship between macrophage-tropism and gp120 charge for HIV-1 R5 envelopes present in immune and brain tissue of AIDS patients with neurological issues.

Untreated HIV-1+ individuals frequently suffer from HIV associated neurocognitive disorders, which are characterized by sensory neuropathy, sensory myelopathy and eventually dementia. The most severe dementias occur in about 30% of AIDS patients. The mechanisms that cause dementia are unclear but likely involve disruption of normal neurological functions by toxic factors that are upregulated either as a direct result of HIV replication or indirectly as a consequence of inflammatory processes [19-21]. Even in the era of highly effective anti-retroviral therapies, milder neurocognitive impairments persist [22,23], while the more severe neurocognitive disorders are still apparent in subjects who fail therapy [24].

The brain is colonized early after infection [25]. However, proviral DNA is difficult to detect in brain tissue during the asymptomatic phase [26-29]. Mechanisms of entry into the brain are unclear, although the virus must penetrate the blood brain barrier (BBB) or enter via the choroid plexus and cerebral spinal fluid (CSF). A 'trojan horse' mechanism of entry is favored whereby infected monocytes carry the virus through the BBB [30]. In support of this, HIV env sequences in deep white matter were reported to be more closely related to env sequences in blood monocytes than sequences from other tissues [31,32], although only a single individual was studied. *In situ* hybridization and immunohistochemistry have detected HIV infection and accumulation in cells surrounding blood capillaries including CD14⁺ cells [33-35]. These CD4⁺ CCR5⁺ perivascular macrophages are a major reservoir of HIV-1 in the brain [19,36-38]. A hallmark of HIV-associated neuropathology is the presence of multinucleated giant cells (MNGCs) in brain tissue [19,39]. MNGCs express CD68 and are believed to result from HIV induced fusion of infected and uninfected perivascular macrophages [40]. Resident microglia (monocyte/macrophage lineage) are also infected in humans

[36,37,41] and support HIV replication when cultured *in vitro* [19]. The number of activated monocytes in blood was reported to correlate with AIDS dementia [42], and it is likely that the brain is reseeded by infected, activated monocytes that enter the brain in late disease [32].

Many studies have shown that HIV-1 sequences are frequently compartmentalized in the brain and are distinct from sequences from blood or immune tissue [43-49]. A relatively small number of highly macrophage-tropic R5 virus isolates made from brain tissue have been described [50,51]. Fewer studies have compared the phenotypes of envelopes derived by PCR without culture from these compartments. As discussed above, we reported that envelopes amplified from brain tissue were predominantly highly tropic for macrophages while those from other sites including blood, plasma, lymph node and spleen were predominantly non-macrophage-tropic despite uniformly using CCR5 and not CXCR4 [12,52]. The only other study to investigate the tropism of PCR amplified envelopes also described a wide variation in macrophage-tropism of R5 envelopes but failed to demonstrate a clear association of macrophage-tropism with brain envelopes compared to those from lymphoid tissue [53]. Furthermore, a potential role for CXCR4-using viruses in the brain has also been proposed [50,51,54,55]. It should also be emphasized that these earlier studies investigating the phenotypes of envelopes amplified from brain tissue studied relatively few envelopes from only a few individuals [12,13,53].

Here, we endeavored to evaluate the phenotypes of a large number of envelopes amplified by PCR from the brain and the immune tissue. We present a detailed investigation of 183 envelope clones amplified from brain, spleen and lymph node tissue of five subjects including four new subjects who died with HIV associated dementia. We show that HIV-1 R5 envelopes carrying gp120s with an increased positive charge were present in immune tissue and had evolved independently from highly macrophage-tropic variants with low charge gp120s in the brain. We also show that independent evolutionary pathways to macrophage-tropism are present in immune tissue. In summary, our data are consistent with the presence of powerful pressures in brain and in immune tissue selecting for (or against) R5 envelopes that are highly macrophage-tropic or that carry an increased gp120 charge respectively. Our study provides important new insights into the evolution of HIV-1 R5 envelopes with very distinct properties at different sites in the body and driven by powerful tissue specific evolutionary pressures.

Results

Compartmentalization of HIV-1 envelope sequences from brain, lymph node and spleen tissue

We first investigated the compartmentalization of envelope sequences (n = 183) amplified from proviral or

episomal DNA of five HIV-1+ subjects with neurological conditions (Table 1). Circular episomal DNA has been reported to be labile in T-cells and associated with ongoing replication [56], although this is controversial [57]. A further report suggested that circular DNA forms were more stable in macrophages [58]. Envelope gp160 sequences were amplified from DNA extracted from frontal lobe tissue for all subjects, from the cerebellum for subject 7766 and occipital lobe for CA110. Envelopes were also amplified from the spleen of four subjects and from the lymph node of two including the fifth subject (NA20). Phylogenetic trees were produced using maximum likelihood methods via MEGA version 5. All envelopes amplified clustered with standard clade B envelopes and not with envelopes from other clades (data not shown). Trees presented on Figure 1 were rooted with three clade B envelope sequences. Envelope sequences for each subject segregated separately, were distinct from the three clade B reference sequences and did not segregate with any on the HIV sequence database <http://www.hiv.lanl.gov/content/sequence/HIV/mainpage.html>. For four subjects, brain envelopes were distinct from those from spleen (7766, CA110 and 6568) or lymph node (CA110 and NA20). Envelopes from the fifth subject (10017) were more interspersed. Envelopes amplified from circular DNA forms did not segregate separately from proviral DNA, regardless of tissue origin.

Almost all envelopes amplified were R5

All envelopes were screened for functionality by testing whether env+ pseudovirions conferred infection of HeLa TZM-bl cells, which express recombinant CD4 and CCR5 along with endogenous CXCR4. 56.9% of envelopes conferred high levels of infectivity for HeLa TZM-bl cells regardless of whether they were amplified from frontal lobe, spleen or lymph node. In contrast, envelopes amplified from the cerebellum of subject 7766 were not functional in pseudovirion assays. Some of the non-functional envelope carried premature stop codons. However, the majority had open reading frames and their lack of function was unclear.

CXCR4-use was tested on HeLa HIJ cells, which express CD4 and CXCR4 but not CCR5. Only envelope

22-15-107 (from the spleen of subject 10017) conferred low levels of HIJ infection likely indicating CXCR4-use. Thus, nearly all envelopes were R5 even though all the subjects under investigation had AIDS. Furthermore, all envelopes except for 22-15-107 and 14-10-73 (non-functional) were designated as R5 using the Web based PSSM program <http://indra.mullins.microbiol.washington.edu/webpssm/> and carried overall positive charges of +1-5 (total of R and K residues minus total of E and D residues). Envelopes 22-15-107 and 14-10-73 (non-functional) carried a higher V3 charge (+7) consistent with CXCR4-use. These conclusions are further supported by inhibition data on HeLa TZM-bl cells for maraviroc (see below).

Macrophage-tropism of envelopes from brain, spleen and lymph node tissue

We next investigated whether the ability of envelopes to infect primary macrophages was compartmentalized between the brain and immune tissue. We cannot be certain that envelopes amplified from brain tissue were derived from infected macrophages since astrocytes have also been reported to be infected [38,40,59-63]. Nevertheless, nearly all envelopes amplified from brain tissues conferred highly efficient infection of macrophages. In contrast, envelopes amplified from spleen or lymph node varied in macrophage-tropism from background levels up to modest levels of infection, and for a minority of envelopes, highly efficient infection (Figure 2). Thus, highly efficient macrophage infection was observed for subject 10017 spleen envelopes, 20-12-82 and 9-8-57, which clustered phylogenetically among a group of brain-derived envelopes (and along with three further spleen envelopes that were non-functional). However, for most subjects, envelopes from spleen or lymph node (that segregated separately from brain env sequences) showed a gradation in their capacity to infect macrophages ranging from background infection to modestly efficient levels, consistent with an independent evolutionary pathway to macrophage-tropism in immune tissue. In addition, the lymph node envelope 23-14-2 from NA20 conferred high levels of macrophage infection (similar to most brain envelopes), while clustering phylogenetically (Figure 1)

Table 1 Characteristics of HIV-1+ subjects studied

Patient No.	Collection Year	Brain Bank	Disease status	CD4 count	Viral Load*	Therapy history
7766	1999	NNTC	AIDS, HAD, HIVE	43	1,843	3TC, ABC, EFV, D4T, DDI, IDV, NFV, ZDV
6568	2001	NNTC	AIDS, HAD, HIVE	77	> 750,000	3TC, ABC, D4T, DDC, DDI, EFV, IDV, NFV, NVP, ZDV
CA110	1999	UCSD	AIDS, HAD, HIVE	21	198,957	No use reported
10017	1999	Mt. Sinai	AIDS, HIVE, IVDU	7	389,120	3TC, D4T, SQV, ZDV
NA20	1993	Edinburgh	Hemophilic**	4	-	No use reported

*Last available record prior to death

**Mild cognitive impairment, sparse giant cell encephalitis, cerebral toxoplasmosis. Status = hemophilic

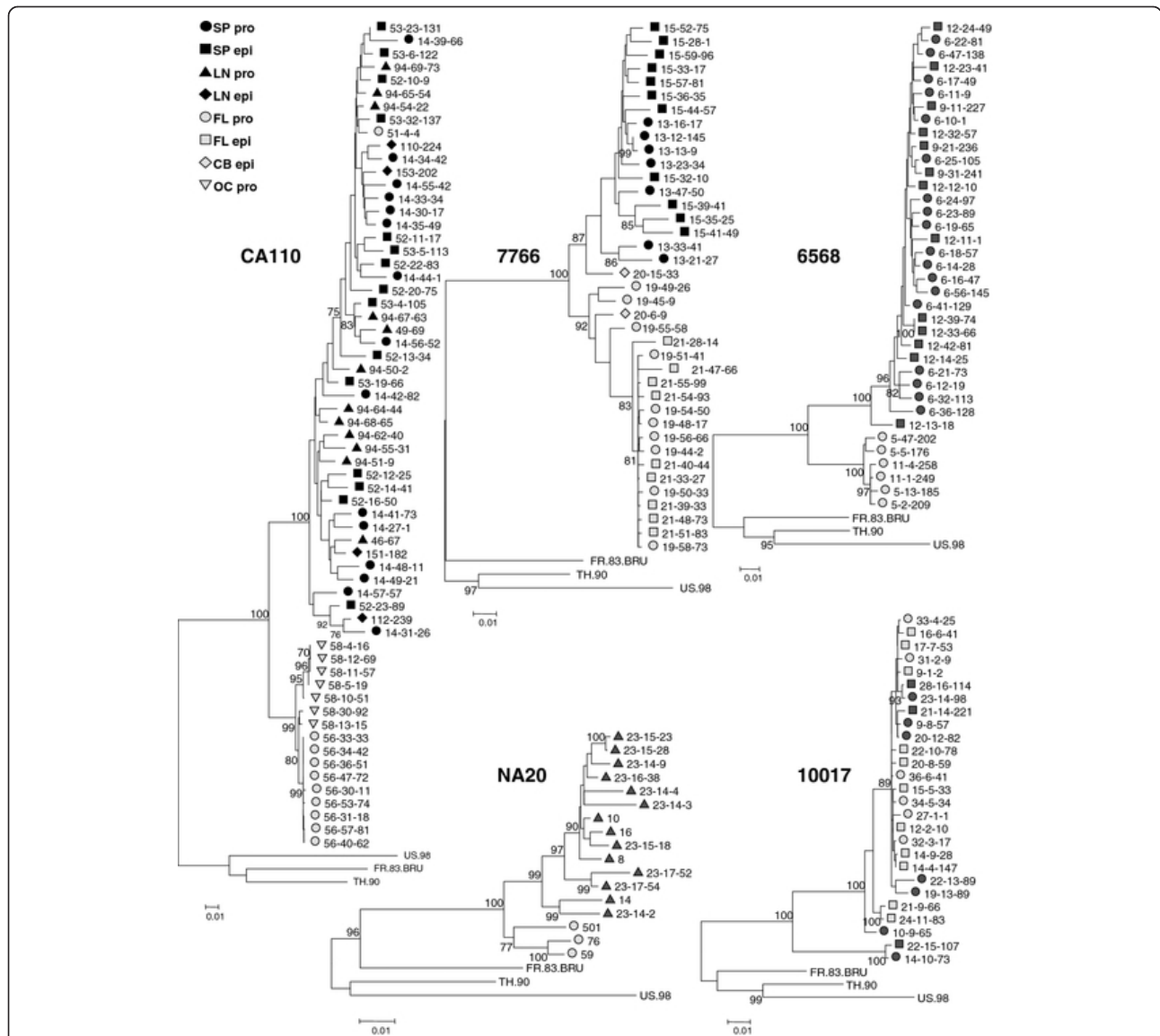


Figure 1 Phylogenetic analysis (MEGA 5) of HIV-1 envelope nucleotide sequences amplified from brain and immune tissue. Tight compartmentalization of brain and immune tissue envelope sequences was observed for subjects CA110, 6568, 7766 and NA20. Envelope compartmentalization was less clear for subject 10017. Numbers at branch points represent bootstrap values.

with other immune tissue envelopes that conferred inefficient macrophage infection (Figure 2). This observation suggests that 23-14-2 evolved efficient macrophage infection independently from those in the brain. However, further analyses indicated that 23-14-2 is a recombinant between spleen and brain envelopes (data not shown).

A minority of brain-derived envelopes clustered closely with those from spleen; 20-15-33 (subject 7766) and 51-4-4 (subject CA110). Unfortunately, the 7766 envelope was not functional. However, 51-4-4 conferred a non-macrophage-tropic phenotype similar to spleen and lymph node envelopes, suggesting that it could have been derived from blood in brain tissue capillaries.

Immune tissue envelopes carry a higher overall positive charge in V1-V2 and V1-V5 regions

Previous studies reported two distinct and emerging phenotypes for primary R5 viruses isolated from blood in late disease. First, R5 isolates carrying a higher overall positive charge for the V1-V5 region were reported to carry increased fitness and decreased sensitivity to CCR5 ligands [14-17]. These properties were hypothesized to result in enhanced envelope interactions with CCR5 and increased replication in T-cells [14-17] including populations expressing lower CCR5 levels [64]. Second, several studies reported on the isolation of R5 isolates from blood of adult and pediatric AIDS patients that conferred an

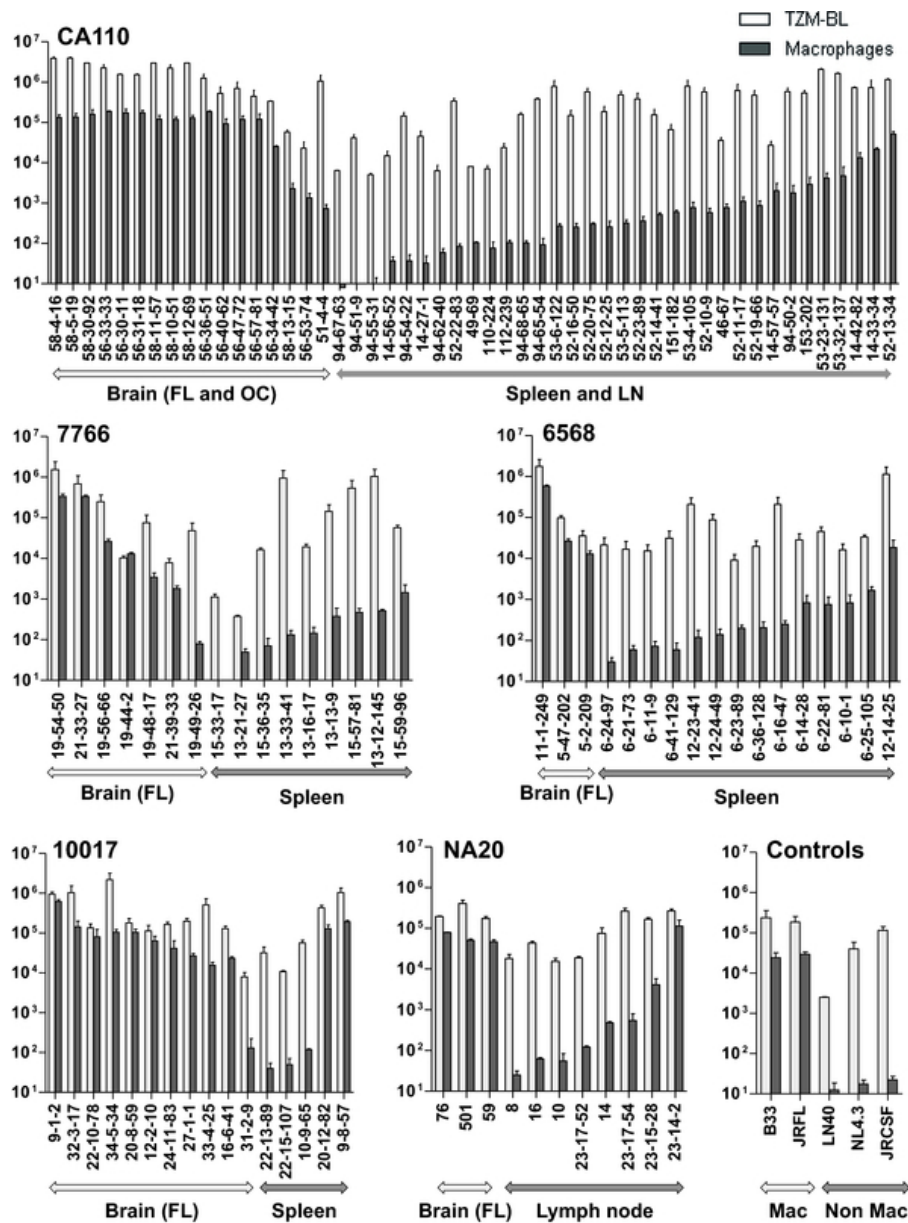


Figure 2 Compartmentalized macrophage infectivity for brain and immune tissue envelopes. Nearly all envelopes amplified from brain tissue efficiently infected primary macrophage cultures. In contrast, envelopes from immune tissue varied in the capacity to infect macrophages with infection ranging from background levels to highly efficient infection for a small minority. Infectivity is presented as FFU/ml and was derived from titers averaged from at least two assays using macrophage prepared from different donors.

enhanced macrophage-tropism [9-11]. Here, we showed significant differences in the overall positive charge of V1-V5 and V1-V2 amino acids for 4 of the 5 subjects (Figure 3A, B). Brain-derived envelopes from these four subjects carried a lower overall charge compared to those from immune tissue (Table 2). For the fifth subject (NA20), there were insufficient brain envelopes to undertake a reasonable comparison. These observations show for the first time that these distinct envelope characteristics arise independently. R5 variants with increased gp120 charge appear

to evolve in immune tissue while highly mac-tropic variants predominantly emerge in the brain and possibly other non-immune tissues where macrophages are the main targets for infection.

Brain and immune tissue envelopes sometimes differ in length and potential N-linked glycosylation sites

There were significant differences in V1-V5 length between brain and immune tissue envelopes for subjects 7766, 6568 and NA20 but not for other subjects (Figure 4A, Table 2).

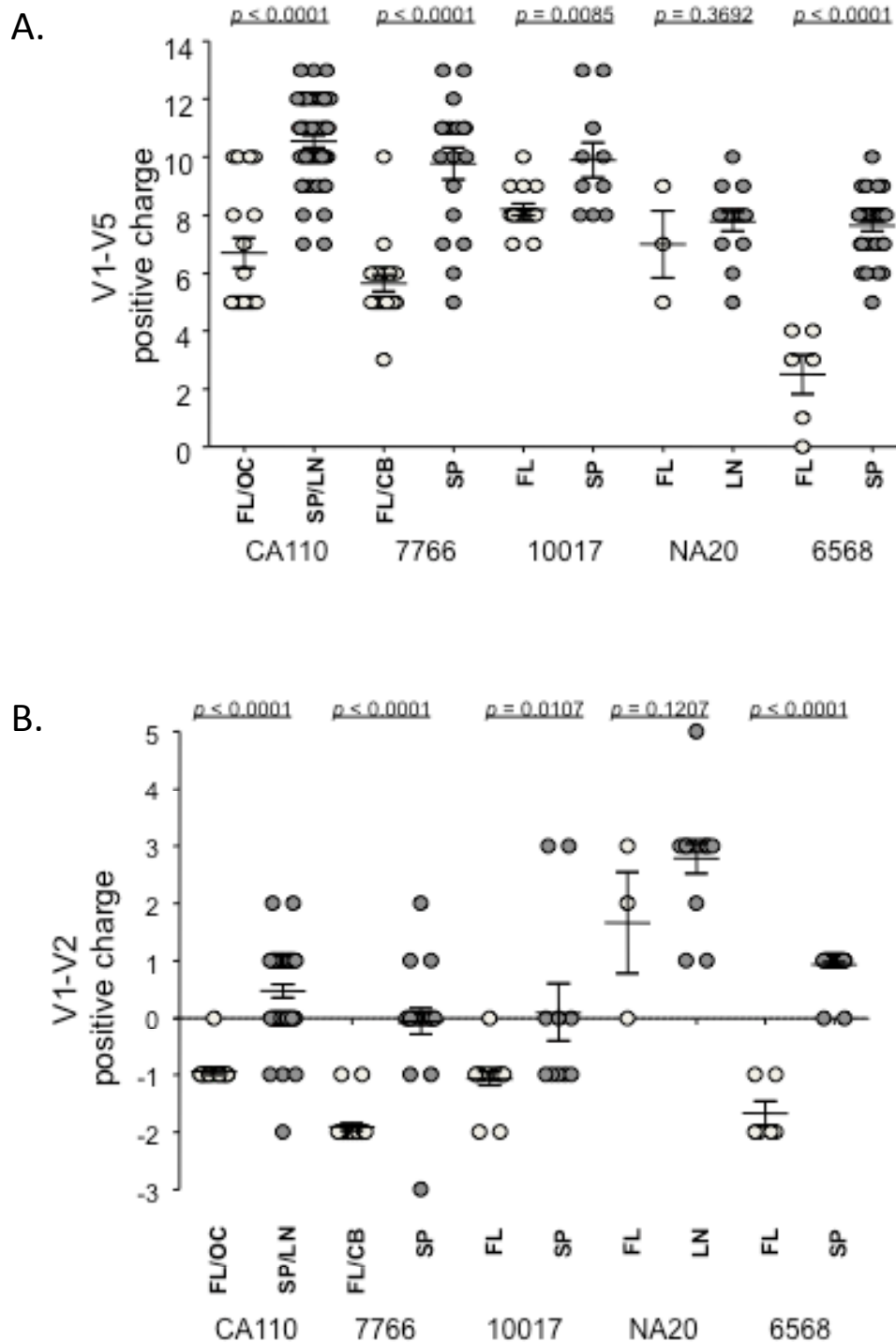


Figure 3 Overall positive charge of HIV-1 V1-V2 and V1-V5 regions of envelopes amplified from brain and immune tissue. Immune tissue envelopes from four of five subjects carry a significantly higher positive charge compared to corresponding envelopes from brain. A-B: Overall positive charge of V1-V5 (A) and V1-V2 (B) amino acid sequences. All amplified envelopes shown in Figure 1 were included in this analysis.

Table 2 Characteristics of envelopes amplified from brain and immune tissue

Subject	Tissue	N° of Amplicons	Average length (amino acids)			Average Overall Positive Charge			N° of CHO V1-V5*	Presence of N283 (%)	Presence of N386 (%)
			V1-V2	V1-V5	V3	V1-V2	V1-V5	V3			
CA110	FL	10	68.7	337.8	35	-0.9	5.3	3	22.7	100	100
	OC	7	69	338	35	-1	8.7	3	21	100	100
	SP	30	66.9	338.4	35	0.6	10.7	3.5	21.2	100	100
	LN	16	65.9	338	35	0.3	10.2	3.6	20.5	100	100
7766	FL	19	67.1	342.8	35	-2	5.5	1.8	18.8	100	100
	CB	2	68	344	35	-1.5	7.5	2	19	100	100
	SP	18	67.4	341.6	35	0	9.8	1.9	18.3	100	100
6568	FL	6	65	335	34	-1.7	2.5	2.8	17.7	0	0
	SP	31	68.1	338.4	35	0.9	7.6	1.1	15.9	0	100
10017	FL	17	72.6	346.5	35	-1.1	8.2	4	20.9	0	100
	SP	10	73.7	346.6	35	0.1	9.9	4.7	21.3	0	100
NA20	FL	3	70	346.7	35	1.7	7	3.3	20	100	100
	LN	14	73.4	354.4	35	2.8	7.8	3.8	20.2	14.3	100

However, differences in V1-V5 lengths for subjects 6568 and 7766 brain and spleen envelopes were reversed, while only three NA20 brain envelopes were available for testing. Similarly, no clear pattern between V1-V2 length and brain, immune tissue or macrophage infectivity emerged (Table 2).

There were some differences in the number of potential N-linked glycosylation sites (PNGSs) between brain and immune tissue envelopes (Figure 4B, Table 2). For subjects CA110, 7766 and 6568 those differences were of significance. Curiously, for these subjects, the brain derived envelopes carried a slightly higher average number of PNGSs compared to LN/spleen envelopes.

These observations do not show consistent relationships between either gp120 length or PNGSs sites on gp120 with non-macrophage-tropic or macrophage-tropic phenotypes of R5 envelopes late in disease.

Envelope signatures for brain and macrophage-tropism

Dunfee *et al.* reported that an asparagine at residue 283 (in the C2 part of the CD4bs; not a glycosylation site) was present in 41% envelopes amplified from brain tissue of subjects with HAD but only in 8% from non-HAD subjects [65]. N283 confers an increased affinity for CD4 [65] and enhances macrophage infectivity [12,65]. Consistent with Dunfee's observations, all the envelopes from NA20 brain tissue contained N283, compared with only 14.3% of those from LN (Table 2). However, all the envelopes amplified from subjects CA110 and 7766 carried N283, while none of those from 6568 and 10017 did. Yet for these four subjects, brain derived envelopes were consistently more macrophage-tropic compared to those from spleen.

Several studies have implicated the glycan at residue 386 in the protection of the CD4bs [66,67] and macrophage

infection [67,68]. For subject 6568, all envelopes from spleen carried a PNGS at N386, which was absent in envelopes from brain tissue. For the other four subjects, all envelopes from brain and spleen tissue carried the PNGS at N386.

Together these results show that N283 and the PNGS at N386 sometimes associate with macrophage-tropism and a brain origin. However, this is clearly not a universal relationship.

Sensitivity of envelopes to the CD4bs mab, b12, soluble CD4 and maraviroc

We previously reported a significant correlation between macrophage tropism and sensitivity to sCD4 inhibition for a large panel of envelopes derived from brain and immune tissues as well as from blood and semen [52]. However, there was no significant correlation between macrophage infection and sensitivity to CCR5 antagonists, TAK779 and SCH350581, even though for two subjects, envelopes from brain were significantly more sensitive than those from lymph node [52]. In this previous study, we also observed a trend between macrophage-tropism and sensitivity to the CD4bs mab, b12, although it did not reach significance. These observations support an enhanced interaction between the envelope and CD4 (but not CCR5) for highly macrophage-tropic R5 variants. In contrast to our data, Dunfee *et al.* reported a significant association between enhanced macrophage-tropism in the brain and b12 sensitivity but did not find a relationship with sCD4 sensitivity [69]. To further investigate envelope interactions with CD4 and CCR5, we selected a subset of 32 envelopes from brain and immune tissue of the five subjects (Table 3) along with control non-macrophage-tropic JR-CSF and macrophage-tropic JR-FL envelopes and tested their sensitivity to b12, sCD4 and maraviroc

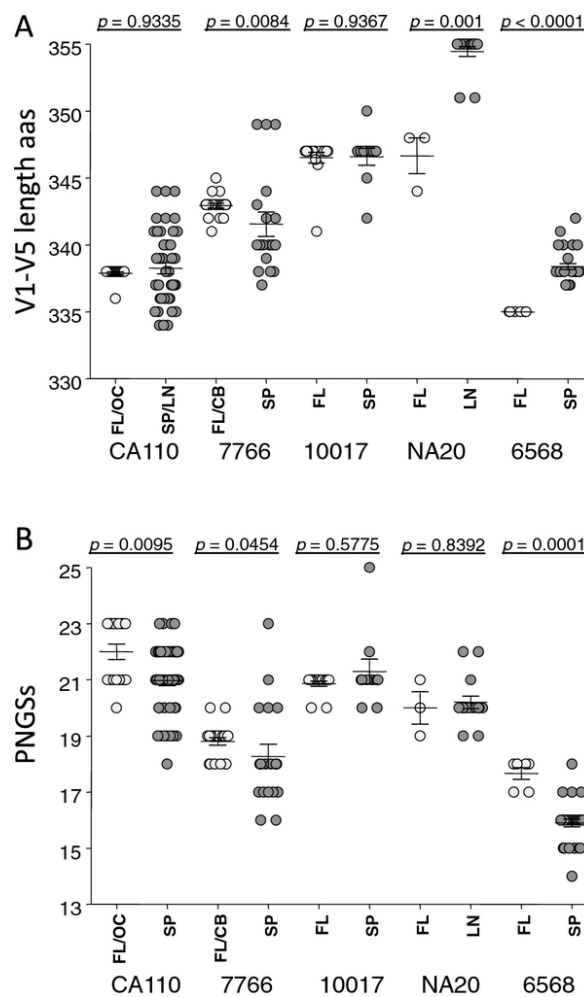


Figure 4 Brain and immune tissue V1-V5 gp120 do not significantly differ in length (A) and or extent of N-linked glycosylation sites (B). All amplified envelopes shown in Figure 1 were included in this analysis.

(Figure 5). This set of envelopes was carefully selected to include representatives from each subject that covered the full range of macrophage infectivity observed in LN/spleen. Brain envelopes included were all highly macrophage-tropic except for FL19-49-26, which did not infect macrophages.

Our new data confirm that brain-derived envelopes were significantly more sensitive to sCD4 inhibition compared to those from LN/spleen (Figure 5A). However, we did not detect significant differences between brain and LN/spleen envelopes for maraviroc or b12 sensitivity (Figure 5A).

We next compared maraviroc, sCD4 and b12 sensitivity to macrophage infectivity (Figure 5B). As we previously reported [52], there was a highly significant correlation between macrophage infectivity and sCD4 sensitivity, but not with maraviroc. A weak correlation with b12 was detected, whereas previously only a trend was noted [52].

In addition, all envelopes tested (except for the CXCR4-using 22-15-107) were completely inhibited by maraviroc (data not shown), i.e. there was no reduction in the level of maximal inhibition that has been associated with use of drug occupied CCR5 [70] or the use of an additional alternative coreceptor.

It needs to be emphasized that the compartmentalization of brain and immune tissue envelopes can lead to the segregation of different phenotypes that reflect the properties of the founding viruses, rather than a specific adaptation to the tissue. To avoid this possibility, we also evaluated whether the variation in macrophage infectivity observed solely among LN/spleen envelopes correlated with sensitivity to sCD4, b12 or maraviroc. The *p* values obtained for each inhibitor were similar to those obtained using the full panel of brain and immune tissue envelopes. Our results therefore confirm a strong correlation between macrophage infectivity and sCD4

Table 3 Brain and immune tissue envelopes selected for inhibitor analyses

Subject	Tissue	Envelop	Macrophage infectivity
6568	Frontal lobe	FL 11-1-249	+++
		FL5-47-202	+++
	Spleen	SP 12-23-41	+++
		SP 12-24-49	-
		SP 6-22-81	-
		SP 12-14-25	-
10017	Frontal lobe	FL24-11-83	+++
		FL27-1-1	+++
	Spleen	SP10-9-65	
		SP22-15-107	
		SP9-8-57	
		SP20-12-82	
7766	Frontal lobe	FL 19-49-26	+++
		FL 19-54-50	+++
		FL 19-56-66	-
	Spleen	SP 13-12-145	-
		SP 13-33-41	-
		SP 15-59-96	+
CA100	Frontal lobe	FL 58-13-15	++
		FL 58-30- 92	+++
		FL 56-33-33	+++
	Spleen	SP 53-6-122	-
		SP 52-20-75	-
		SP 52-16-50	-
NA20	Frontal lobe	B59	+++
		B501-26	+++
	Spleen	LN8	-
		LN10	-
		LN14	-
		LN23-14-2	+++
JR	Frontal lobe	JRFL	+++
	Spleen	JRCSF	-

sensitivity and a less significant relationship with b12 (Figure 5C).

Discussion

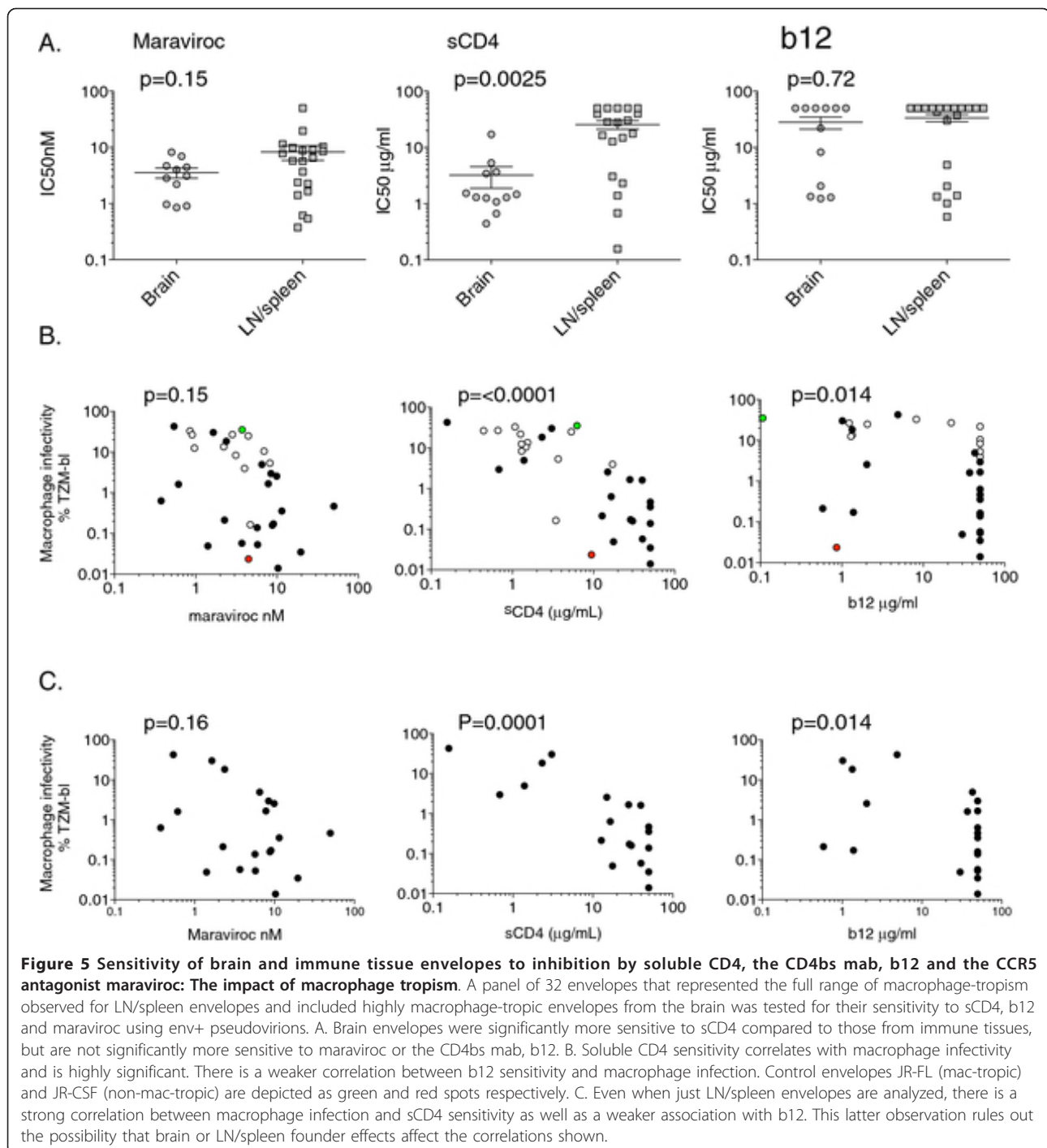
Our data show for the first time that macrophage-tropism and increased envelope charge among HIV-1 R5 envelopes evolve independently in brain and immune tissue. We also confirm and greatly extend our previous studies that had indicated the compartmentalization of envelope phenotype with macrophage-tropic envelopes in brain tissue and a predominance of non-macrophage-tropic envelopes in immune tissue and plasma [12,13]. The predominance of charged envelopes in immune tissue is consistent with an adaptation for replication in CD4+ T-cells and perhaps colonization of T-cells expressing lower levels of CCR5

late in disease [64]. We are currently investigating these possibilities.

Here, envelope sequences from brain and spleen (or lymph node) derived envelopes were compartmentalized for 4 of 5 subjects. Subject 10017 was clearly an exception, where several of the spleen envelopes clustered with those from frontal lobe. Nevertheless, for all subjects (including 10017), macrophage-tropism was consistently highly compartmentalized to brain tissue. In contrast, the vast majority of envelopes from spleen or lymph node were substantially less macrophage-tropic, varying from background levels of infectivity to moderate infection with strong macrophage infection conferred by only a minority of envelopes. The consistent compartmentalization of envelope phenotype (even in the absence of sequence segregation) is consistent with the presence of strong environmental pressures in the brain and immune tissues selecting for highly macrophage-tropic and non-macrophage-tropic envelopes respectively.

A small number of highly macrophage-tropic envelopes were detected in immune tissue. However, we do not have categorical evidence that they evolved there. The highly macrophage-tropic envelopes from the spleen of subject 10017 clustered among brain-derived envelopes and have not originated independently. The highly macrophage-tropic envelope 23-14-2 from subject NA20 LN clustered with those in lymph node. Our initial interpretation was that macrophage-tropism of this envelope may have evolved independently from those in brain. However, subsequent analyses via Simplot revealed that this envelope was a recombinant and carried sequences between the V1 and V3 loops more closely related to those in brain derived envelopes (data not shown). This observation adds further support to Brown's recent report on intercompartment recombination modulating tropism and contributing to diversity and with affects on tropism [71]. For subjects 7766, 6568 and CA110, a clear gradation of macrophage-tropism was observed in immune tissue with the most macrophage-tropic envs conferring moderate levels of infectivity (although less than the highly mac-tropic brain envelopes). The range of macrophage infectivity in immune tissue of these subjects represents clearer evidence of an independent route to macrophage-tropism compared to brain envelopes. Only very few non-macrophage-tropic envelopes were amplified from the brain tissue samples. These included 51-4-4 from subject CA110 frontal lobe and 31-2-9 from 10017 frontal lobe. These envelopes may have been amplified from T-cells circulating in brain blood capillaries.

Envelope determinants previously reported to be associated with macrophage-tropism include (1) N283 in the CD4bs, which confers an increased affinity for CD4 [65] and enhances macrophage infectivity [12,65]. (2) The loss of an N-linked glycosylation site at residue 386



(N386) [67,68] and (3) a conserved V1 loop residue [72]. However, none of these determinants fully explain the macrophage-tropism of the envelopes studied here. Only for subject NA20, did N283 segregate predominantly with brain envelopes. Curiously, while all envelopes amplified from subjects CA110 and 7766 carried N283, none of those from 6568 and 10017 did. Yet for these four subjects, brain derived envelopes were consistent in

conferring substantially higher levels of macrophage infection compared to those from spleen regardless of the presence or absence of N283. All eight brain-derived envelopes from subject 6568 lacked N386 consistent with the reported association. However, all other envelopes amplified in this study contained N386, indicating that its loss is subject dependent. A recent study describing highly macrophage-tropic envelopes amplified

from the CSF, also failed to identify determinants of tropism [73]. Further investigation is needed to provide a clearer view of the envelope changes in structure and function that contribute to macrophage-tropism.

Finally, studies from other groups have implicated a more efficient or altered engagement with CCR5 for macrophage-tropic R5 envelopes including those in the brain [51,74]. However, this has not been evident in our studies using maraviroc here or other CCR5 antagonists in previous studies [52]. Nor have we detected consistent differences in infectivity assays using HeLa cell lines expressing different levels of CCR5 [12,13]. Nevertheless, further experiments are needed to evaluate whether macrophage-tropic R5 envelopes (described here) exploit distinct regions of CCR5.

HIV-1 R5 viruses that are non-macrophage-tropic are preferentially transmitted [1-4,75,76]. Data presented here indicate that they still predominate in immune tissue even in late disease. However, increased T-cell tropism (either via CXCR4-use or via retention of CCR5-use [14-17]) and enhanced macrophage-tropism [9-11] are likely to be independent indicators perhaps associated with distinct pathogenic outcomes.

Conclusions

We show that highly macrophage-tropic, low positive charge envelopes can be detected in brain tissue of AIDS patients suffering from severe neurological disease. These highly macrophage-tropic envelopes contrast sharply with those present in immune tissue that mainly confer inefficient macrophage infection. These latter envelopes carry a higher positive charge that was previously associated with increased T-cell tropism. Strikingly, these distinct phenotypes were evident for subject 10017, even though sequences for this subject were closely related and not clearly compartmentalized. Our data are consistent with the presence of powerful selective environments in immune and brain tissue that select for R5 virus variants with very different characteristics and tropism properties.

Methods

HIV-1+ subjects

Brain frontal and occipital lobes, cerebellum, together with spleen and LN samples were obtained at autopsy and kept frozen at -80°C. Tissue samples were provided by the National NeuroAIDS Tissue Consortium (NNTC) and by the University of Edinburgh Brain Bank. HIV-1 envelopes described here were amplified from subjects 7766, 6568, CA110, 10017 and NA20; heterosexual patients with HIV associated dementia (HAD), HIV encephalitis (HIVE) or cognitive impairment all of whom progressed to AIDS and died. Table 1 lists the five patients included for this study. Samples from three subjects provided by the NNTC are from patients treated extensively by HAART (7766, 6568

and 10017), while the fourth (CA110) had no reported use. NA20 was described previously and was a subject from before the HAART era [12,13]. We have increased the number of functional envelopes amplified from this subject.

Nucleic acid extraction and PCR amplification of env from single molecule templates

Total DNA was purified from tissues using the QIAamp DNA Mini kit (Qiagen), according to the manufacturer's instructions. DNA was eluted in nuclease-free water and frozen immediately at -20°C for storage until analysis.

Sequences covering *rev* and *env* genes were amplified by nested PCR from proviral and circular (episomal) forms of viral DNA present in brain and spleen or LN tissue. The presence of *rev* in cis upstream from envelope is important for efficient envelope expression and production of high titer env+ pseudovirions. PCRs were carried out using serially diluted tissue DNA samples so that envelopes subsequently cloned were derived from single genomes when 30% or less of PCR reactions were positive. PCRs used high fidelity DNA polymerases (Platinum[®]Taq DNA Polymerase; Invitrogen Inc., or Phusion[™] DNA Polymerase; Finnzymes Inc.). PCRs were set up as described previously [12] using the following primers. For proviral amplification, outer primers were RevenvA (5'-TAGAGCCCTGGAAGCATCCAGGAAG-3') and EnvN (5'-CTGCCAATCAGGGAAGTAGCCTTGTGT-3'). Outer primers for episomal DNA amplification were RevenvA and LAI (5'-GCGCTTCAGCAAGCCGAGT CCT-3') [56]. The inner primers were the same for both proviral and episomal *rev-env* amplification as follows; RevenvBTOPO (5'-CACCTAGGCATCTCCTATGG-CAGGAAGAAG-3') and Env-lo (5'-GTTTCTTCCA GTCCCCCTTTTCTTTTAAAAAG-3'; [77]). The PCR products in positive wells at endpoint dilutions were purified from a 0.8% crystal violet stained agarose gel using a QIAquick Gel Extraction Kit (Qiagen).

All envelopes from subjects CA110, 7766, 6568 and 10017 were amplified and cloned using limiting dilution protocols [2,78]. NA20 envelopes, (including previously described B59, B76, B501, LN8, LN10, LN14 and LN16 [12,13] and newly amplified envelopes, (23-14-2, 23-14-3, 23-14-4, 23-14-9, 23-15-18, 23-15-23, 23-15-28, 23-16-38, 23-17-52 and 23-17-54, 23-15-28) were cloned from proviral DNA not rigorously diluted to endpoint due to limited amounts of DNA.

Envelope cloning and sequencing

Purified PCR products were cloned into pcDNA[™] 3.1D/V5-His-TOPO[®] (pcDNATM3.1 Directional TOPO[®] Expression Kit; Invitrogen Inc). Env+ plasmids were transformed into competent *E. coli* (TOP10; Invitrogen Inc.). Colonies were screened for correct *rev-env*

insertions by PCR using a universal T7 Promoter primer (5'-TAATACGACTCACTATAGGG-3') and M5-R (5'-CCAGCTGGGGCACAATAATGTATGGGAATTGG-3' (a primer that hybridizes within our insert); [79]) using Go Taq[®] Green Master Mix (Promega Inc.). Plasmid DNA was purified using QIAprep Miniprep Kit (Qiagen) and sequenced by Genewiz Inc.

Up to 32 endpoint rev-env clones were sequenced for each sample and analyzed phylogenetically to establish the population diversity. Envelope sequences were analyzed for variation likely to impact on phenotypes e.g. N283, variable loop length, V1-V2, V3 and V1-V5 loop charge, PNGSs as well as for mutations likely to render envelopes non-functional e.g. deletions, premature stop codons, loss of a conserved cysteine involved in disulphide bonding etc. Non-functional envelopes with stop codons or deletions were not included in the analyses.

The nucleotide sequences of novel envelopes reported here have been assigned GenBank accession numbers JN786685-JN786871.

Phylogenetic analyses

Complete gp160 env nucleotide sequences were assembled and aligned using Clustal x [80] with manual adjustment. All positions with an alignment gap of one or more nucleotides were excluded.

Phylogenetic and molecular evolutionary analyses were conducted using MEGA version 5 [81]. Maximum likelihood phylogenetic trees were generated using General Time Reversible Substitution Model using a discrete Gamma distribution with 5 rate categories and by assuming that a certain fraction of sites are evolutionary invariable for subjects CA110, 7766 and 6568 and without invariant sites for subjects NA20 and 10017. Bootstrap analyses on 1,000 replicates was used to assess the robustness of the tree. Significant ($\geq 70\%$) bootstrap values were assigned to internal tree nodes. Reference sequences representing three HIV-1 group M subtype B (<http://www.hiv.lanl.gov/envelopes> (FR.83. HXBc2. K03455; TH.90. BK132.AY173951; US.98.1058 11.AY331295) were used as outgroups.

Cell cultures

293T cells were used to prepare env+ pseudovirions by transfection. HeLa TZM-bl [82] were used to evaluate env+ pseudovirion infectivity titers and neutralization. Pseudovirion infectivity was also evaluated on CD4+ CXCR4+ CCR5- HeLa HIJ cells to monitor CXCR4-use. HeLa TZM-bl cells express high levels of CD4, CCR5 and CXCR4 and contain HIV-inducible β -galactosidase and luciferase reporter genes. 293T cells, TZM-bl cells, and HIJ cells [83], were maintained in Dulbecco's modified Eagle's medium (DMEM, Gibco-Invitrogen, Carlsbad, CA) supplemented with 10% fetal bovine serum

(FBS) and were cultured as previously described [12,66,68].

Macrophage cultures were prepared from elutriated monocytes [12,66,68], which were provided by the University of Massachusetts Center for AIDS Research Elutriation Core. The elutriated monocytes were cultured for 5 days in DMEM medium containing 10% human plasma (HP) for differentiation before setting up for infection. Alternatively, macrophages were prepared from Ficoll-purified white blood cells from whole blood by as described previously [12]. On the day prior to infection, the macrophages were washed and resuspended in DMEM medium containing 10% HP and cultured in 48-well tissue culture plates (1.25×10^5 cells/well/0.5 ml).

Production and infectivity assays of env+ pseudovirions

Env+ pseudovirions were prepared by cotransfection of env+ pTOPOenv vector with env- pNL4.3 Δ env construct that carried a premature stop codon in env [12] into 293T cells using calcium phosphate. Cell free supernatants were harvested after 48 h culture and frozen at -152°C prior to experimental analysis.

Env+ pseudovirions were titrated on HeLa TZM-bl cells, HeLa HIJ cells and on macrophages. For HeLa TZM-bl and HeLa HIJ cells, 2×10^4 cells/0.5 ml were added to each well on a 48 well plate the day prior to virus titration. Virus titers were determined as described previously (Peters 2004, 2006). Briefly, 100 μl of serially diluted viral supernatants in DMEM media (10% FBS) were added to cells in duplicate and incubated for 3 hours. 0.4 ml of DMEM (10% FBS) was added to each well and cultures incubated for 48 h (HeLa TZM-bl) or 72 h (HIJ). TZM-bl cells were then fixed in 0.5% glutaraldehyde in PBS and β -galactosidase X-gal substrate added. HeLa HIJ cells were fixed in cold methanol:acetone 1:1, washed and immunostained for p24 using monoclonal antibodies 38:96K and EF7 (UK Centre for AIDS Research), followed by an anti-mouse IgG- β -galactosidase conjugate and X-gal substrate (0.5 mg/ml X-gal, 3 mM potassium ferricyanide, 3 mM potassium ferrocyanide, 1 mM magnesium chloride).

Macrophages were seeded in 48 well plates (1.25×10^5 cells/0.5 ml/well) the day prior to infection. Macrophages were pretreated with 0.1 ml DEAE dextran (10 $\mu\text{g}/\text{ml}$) in DMEM medium containing 10% HP for 30 min at 37°C before virus supernatants were added and spinoculating for 45 minutes in a benchtop centrifuge [84]. Infected macrophages were incubated for a further 3 h at 37°C before the addition of 0.4 ml of DMEM (10% HP) and incubating at 37°C for seven days. Macrophages were then fixed and immunostained for p24 as described for HIJ cells. DEAE dextran and spinoculation enhance virus infectivity by approximately 20-fold by increasing attachment [84] and entry [85]. Infection following this procedure does not bypass the requirement of CD4 and CCR5

for infection, which remains sensitive to entry inhibitors. Thus, macrophage infection conferred by envelopes described here was inhibited by maraviroc (not shown). Since env⁺ pseudovirions are capable of only a single round of replication, we were able to estimate the number of focus-forming units (FFU) by counting individual or small groups of infected blue-stained cells by light microscopy. Average numbers of FFUs/ml were then calculated. All values represent the averages of at least two independent experiments, each done in duplicate and using macrophages from different donors. Error bars in figures were calculated from replicate wells of both experiments.

Each set of macrophage, TZM-bl and HIJ infections included several control env⁺ pseudovirions including NL4.3 (X4), JR-CSF and NA420 LN40 (non-mac-tropic R5 envelopes), JR-FL and NA420 B33 (mac-tropic R5 envelopes).

Inhibition and neutralization assays

Inhibition and neutralization assays for soluble CD4 (sCD4), maraviroc and mab b12 were carried out in 96 well plates as described previously using HeLa TZM-bl cells as target cells [52]. For maraviroc, cells were treated with 2-fold dilutions in 50 µl for 30 minutes before adding an equal volume containing 200 FFU of pseudovirions. For sCD4 and b12, 50 µl samples of serially diluted sCD4 were mixed with 50 µl env⁺ pseudovirions carrying 200 FFU at 37°C for 1 h and added to HeLa TZM-bl cells. To evaluate residual infectivity, medium was removed and 100 µl of medium without phenol red added. Cells were then fixed and solubilized by adding 100 µl of Beta-Glo (Promega Inc.). Luminescence was then read in a BioTek Clarity luminometer.

Statistical methods

A robust semiparametric regression model [86] implemented by *R* package *drc* [87] was used to model dose response relationships between the macrophage infectivity (as a percentage of TZM-bl infectivity) and IC50 concentration of maraviroc, sCD4 and b12. The dosages that caused 50% inhibition (IC50) were estimated as well as their 95% confidence intervals (not shown). Two parameter log-logistic regressions were used for one envelope, FL11-1-249 for b12 inhibition due to over-fitting of semiparametric approach in the neighbor area of IC50. When there was no apparent inhibition or inhibition failed to reach 100%, the model-fitting algorithm either did not converge or reported an extrapolating estimate out of the experimental ranges with a very wide confidence interval. For these inhibitions, the IC50 estimates were winsorized by defining them manually from Excel plotted graphs. Two tailed, nonparametric Mann Whitney tests were used to evaluate whether there exists statistically significant differences between

distributions of IC50s of maraviroc, sCD4 and b12 for envelopes from brain and from LN/spleen. Two tailed, non-parametric Spearman tests were used to evaluate whether there exists monotonic correlation between macrophage infectivity and IC50s for maraviroc, sCD4 and b12 (Figure 5). Two tailed, nonparametric Mann Whitney tests were also used to test for significant differences in V1-V5 positive charge, length and number of potential N-linked PNGSs sites. These tests were carried out using Graphpad Prism 5 for Mac OSX.

Acknowledgements

Our work was supported by NIH R01 grants MH64408, AI089334, HD049273, and P01 AI082274. We also wish to acknowledge the University of Massachusetts Center for AIDS Research (P30-AI42845), the NIH AIDS Research and Reference Reagent Program and the Centre for AIDS Reagents, NIBSC, UK, for services and reagents. Autopsy tissue samples were obtained from the National NeuroAIDS Tissue Consortium funding through the NIMH and NINDS Institutes, with samples coming from the Texas NeuroAIDS Research Center U01MH083507, R24 NS45491, the Manhattan HIV Brain Bank: U01MH083501, R24MH59724, the California NeuroAIDS Tissue Network U01MH083506, R24MH59745. Please note that the contents of this paper are solely the responsibility of the authors and do not necessarily represent the official view of the NNTC or NIH. Samples for subject NA20 were received from the MRC HIV brain and tissue bank in Edinburgh, UK.

Author details

¹Program in Molecular Medicine and Department of Microbiology and Physiological Systems, University of Massachusetts Medical School, Biotech 2, 373 Plantation Street, Worcester, Massachusetts 01605-2377. ²School of Public Health and Health Sciences, University of Massachusetts, 411 Arnold House, 715 North Pleasant Street, Amherst, MA 01003-9304. ³The MRC HIV brain and tissue bank in Edinburgh, Department of Pathology (Neuropathology), University of Edinburgh, Wilkie Building, Teviot Place, Edinburgh, UK EH8 9AG. ⁴Centre for Infectious Diseases, Summerhall, Edinburgh EH9 1QH, UK.

Authors' contributions

MPG-P amplified the envelopes, carried out the phylogenetic studies and wrote the manuscript with PRC. OOC did the neutralization and inhibition assays. RL analyzed the neutralization and inhibition data and derived IC50s. WMS amplified some of the initial envelopes in this study. JB provided patient information and advice on samples. PS provided advice on phylogenetic analyses. PRC conceived the study and wrote the manuscript with MPG-P. All authors provided comments on the manuscript. All authors read and approved the final manuscript.

Competing interests

The authors declare that they have no competing interests.

Received: 29 December 2011 Accepted: 15 March 2012

Published: 15 March 2012

References

1. Carrington M, Dean M, Martin MP, O'Brien SJ: **Genetics of HIV-1 infection: chemokine receptor CCR5 polymorphism and its consequences.** *Hum Mol Genet* 1999, **8**:1939-1945.
2. Salazar-Gonzalez JF, Salazar MG, Keele BF, Learn GH, Giorgi EE, Li H, Decker JM, Wang S, Baalwa J, Kraus MH, Parrish NF, Shaw KS, Guffey MB, Bar KJ, Davis KL, Ochsenbauer-Jambor C, Kappes JC, Saag MS, Cohen MS, Mulenga J, Derdeyn CA, Allen S, Hunter E, Markowitz M, Hraber P, Perelson AS, Bhattacharya T, Haynes BF, Korber BT, Hahn BH, et al: **Genetic identity, biological phenotype, and evolutionary pathways of transmitted/founder viruses in acute and early HIV-1 infection.** *J Exp Med* 2009, **206**:1273-1289.
3. Alexander M, Lynch R, Mulenga J, Allen S, Derdeyn CA, Hunter E: **Donor and recipient envs from heterosexual human immunodeficiency virus**

- subtype C transmission pairs require high receptor levels for entry. *J Virol* 2010, **84**:4100-4104.
4. Kishko M, Somasundaran M, Brewster F, Sullivan JL, Clapham PR, Luzuriaga K: **Genotypic and functional properties of early infant HIV-1 envelopes.** *Retrovirology* 2011, **8**:67.
 5. Asjo B, Morfeldt Manson L, Albert J, Biberfeld G, Karlsson A, Lidman K, Fenyo EM: **Replicative capacity of human immunodeficiency virus from patients with varying severity of HIV infection.** *Lancet* 1986, **2**:660-662.
 6. Connor RI, Ho DD: **Human immunodeficiency virus type 1 variants with increased replicative capacity develop during the asymptomatic stage before disease progression.** *J Virol* 1994, **68**:4400-4408.
 7. Scarlatti G, Tresoldi E, Bjorndal A, Fredriksson R, Colognesi C, Deng HK, Malnati MS, Plebani A, Siccardi AG, Littman DR, Fenyo EM, Lusso P: **In vivo evolution of HIV-1 co-receptor usage and sensitivity to chemokine-mediated suppression.** *Nat Med* 1997, **3**:1259-1265.
 8. Tersmette M, Lange JM, de Goede RE, de Wolf F, Eeftink-Schattenkerk JK, Schellekens PT, Coutinho RA, Huisman JG, Goudsmit J, Miedema F: **Association between biological properties of human immunodeficiency virus variants and risk for AIDS and AIDS mortality.** *Lancet* 1989, **1**:983-985.
 9. Gray L, Sterjovski J, Churchill M, Ellery P, Nasr N, Lewin SR, Crowe SM, Wesselingh SL, Cunningham AL, Gorry PR: **Uncoupling coreceptor usage of human immunodeficiency virus type 1 (HIV-1) from macrophage tropism reveals biological properties of CCR5-restricted HIV-1 isolates from patients with acquired immunodeficiency syndrome.** *Virology* 2005, **337**:384-398.
 10. Li S, Juarez J, Alali M, Dwyer D, Collman R, Cunningham A, Naif HM: **Persistent CCR5 utilization and enhanced macrophage tropism by primary blood human immunodeficiency virus type 1 isolates from advanced stages of disease and comparison to tissue-derived isolates.** *J Virol* 1999, **73**:9741-9755.
 11. Tuttle DL, Anders CB, Aquino-De Jesus MJ, Poole PP, Lamers SL, Briggs DR, Pomeroy SM, Alexander L, Peden KW, Andiman WA, Sleasman JW, Goodenow MM: **Increased replication of non-syncytium-inducing HIV type 1 isolates in monocyte-derived macrophages is linked to advanced disease in infected children.** *AIDS Res Hum Retroviruses* 2002, **18**:353-362.
 12. Peters PJ, Bhattacharya J, Hibbitts S, Dittmar MT, Simmons G, Bell J, Simmonds P, Clapham PR: **Biological analysis of human immunodeficiency virus type 1 R5 envelopes amplified from brain and lymph node tissues of AIDS patients with neuropathology reveals two distinct tropism phenotypes and identifies envelopes in the brain that confer an enhanced tropism and fusigenicity for macrophages.** *J Virol* 2004, **78**:6915-6926.
 13. Peters PJ, Sullivan WM, Duenas-Decamp MJ, Bhattacharya J, Ankghuambom C, Brown R, Luzuriaga K, Bell J, Simmonds P, Ball J, Clapham PR: **Non-macrophage-tropic human immunodeficiency virus type 1 R5 envelopes predominate in blood, lymph nodes, and semen: implications for transmission and pathogenesis.** *J Virol* 2006, **80**:6324-6332.
 14. Karlsson I, Antonsson L, Shi Y, Oberg M, Karlsson A, Albert J, Olde B, Owman C, Jansson M, Fenyo EM: **Coevolution of RANTES sensitivity and mode of CCR5 receptor use by human immunodeficiency virus type 1 of the R5 phenotype.** *J Virol* 2004, **78**:11807-11815.
 15. Repits J, Sterjovski J, Badia-Martinez D, Mild M, Gray L, Churchill MJ, Purcell DF, Karlsson A, Albert J, Fenyo EM, Achour A, Gorry PR, Jansson M: **Primary HIV-1 R5 isolates from end-stage disease display enhanced viral fitness in parallel with increased gp120 net charge.** *Virology* 2008, **379**:125-134.
 16. Repits J, Oberg M, Esbjornsson J, Medstrand P, Karlsson A, Albert J, Fenyo EM, Jansson M: **Selection of human immunodeficiency virus type 1 R5 variants with augmented replicative capacity and reduced sensitivity to entry inhibitors during severe immunodeficiency.** *J Gen Virol* 2005, **86**:2859-2869.
 17. Seclen E, Soriano V, Del Mar Gonzalez M, Gonzalez-Lahoz J, Poveda E: **Severe Immune Suppression in Patients Infected with R5-Tropic HIV-1 Strains Is Associated with Increased gp120 Net Charge at Variable Regions.** *AIDS Res Hum Retroviruses* 2011, **27**:965-967.
 18. Duenas-Decamp MJ, Peters PJ, Repik A, Musich T, Gonzalez-Perez MP, Caron C, Brown R, Ball J, Clapham PR: **Variation in the biological properties of HIV-1 R5 envelopes: Implications of envelope structure, transmission and pathogenesis.** *Future Virology* 2010, **5**:417-433.
 19. Gonzalez-Scarano F, Martin-Garcia J: **The neuropathogenesis of AIDS.** *Nat Rev Immunol* 2005, **5**:69-81.
 20. Kaul M, Zheng J, Okamoto S, Gendelman HE, Lipton SA: **HIV-1 infection and AIDS: consequences for the central nervous system.** *Cell Death Differ* 2005, **12**(Suppl 1):878-892.
 21. Kaul M, Garden GA, Lipton SA: **Pathways to neuronal injury and apoptosis in HIV-associated dementia.** *Nature* 2001, **410**:988-994.
 22. Liner KJ II, Ro MJ, Robertson KR: **HIV, antiretroviral therapies, and the brain.** *Curr HIV/AIDS Rep* 2010, **7**:85-91.
 23. McArthur JC, Steiner J, Sacktor N, Nath A: **Human immunodeficiency virus-associated neurocognitive disorders: Mind the gap.** *Ann Neurol* 2010, **67**:699-714.
 24. Tozzi V, Balestra P, Serraino D, Bellagamba R, Corpolongo A, Piselli P, Lorenzini P, Visco-Comandini U, Vlassi C, Quartuccio ME, Giulianelli M, Noto P, Galgani S, Ippolito G, Antinori A, Narciso P: **Neurocognitive impairment and survival in a cohort of HIV-infected patients treated with HAART.** *AIDS Res Hum Retroviruses* 2005, **21**:706-713.
 25. Davis LE, Hjelte BL, Miller VE, Palmer DL, Llewellyn AL, Merlin TL, Young SA, Mills RG, Wachsman W, Wiley CA: **Early viral brain invasion in iatrogenic human immunodeficiency virus infection.** *Neurology* 1992, **42**:1736-1739.
 26. Bell JE, Busuttill A, Ironside JW, Rebus S, Donaldson YK, Simmonds P, Peutherer JF: **Human immunodeficiency virus and the brain: investigation of virus load and neuropathologic changes in pre-AIDS subjects.** *J Infect Dis* 1993, **168**:818-824.
 27. Donaldson YK, Bell JE, Ironside JW, Brettell RP, Robertson JR, Busuttill A, Simmonds P: **Redistribution of HIV outside the lymphoid system with onset of AIDS.** *Lancet* 1994, **343**:383-385.
 28. Teo I, Veryard C, Barnes H, An SF, Jones M, Lantos PL, Luthert P, Shaunak S: **Circular forms of unintegrated human immunodeficiency virus type 1 DNA and high levels of viral protein expression: association with dementia and multinucleated giant cells in the brains of patients with AIDS.** *J Virol* 1997, **71**:2928-2933.
 29. Gosztonyi G, Artigas J, Lamperth L, Webster HD: **Human immunodeficiency virus (HIV) distribution in HIV encephalitis: study of 19 cases with combined use of in situ hybridization and immunocytochemistry.** *J Neuropathol Exp Neurol* 1994, **53**:521-534.
 30. Nottet HS, Gendelman HE: **Unraveling the neuroimmune mechanisms for the HIV-1-associated cognitive/motor complex.** *Immunol Today* 1995, **16**:441-448.
 31. Liu Y, Tang XP, McArthur JC, Scott J, Gartner S: **Analysis of human immunodeficiency virus type 1 gp160 sequences from a patient with HIV dementia: evidence for monocyte trafficking into brain.** *J Neurovirol* 2000, **6**(Suppl 1):S70-S81.
 32. Gartner S: **HIV infection and dementia.** *Science* 2000, **287**:602-604.
 33. Glass JD, Fedor H, Wesselingh SL, McArthur JC: **Immunocytochemical quantitation of human immunodeficiency virus in the brain: correlations with dementia.** *Ann Neurol* 1995, **38**:755-762.
 34. Lane JH, Sasseville VG, Smith MO, Vogel P, Pauley DR, Heyes MP, Lackner AA: **Neuroinvasion by simian immunodeficiency virus coincides with increased numbers of perivascular macrophages/microglia and intrathecal immune activation.** *J Neurovirol* 1996, **2**:423-432.
 35. Williams KC, Corey S, Westmoreland SV, Pauley D, Knight H, DeBakker C, Alvarez X, Lackner AA: **Perivascular macrophages are the primary cell type productively infected by simian immunodeficiency virus in the brains of macaques: implications for the neuropathogenesis of AIDS.** *J Exp Med* 2001, **193**:905-915.
 36. Fischer-Smith T, Croul S, Sverstiuk AE, Capini C, L'Heureux D, Regulier EG, Richardson MW, Amini S, Morgello S, Khalili K, Rappaport J: **CNS invasion by CD14+/CD16+ peripheral blood-derived monocytes in HIV dementia: perivascular accumulation and reservoir of HIV infection.** *J Neurovirol* 2001, **7**:528-541.
 37. Fischer-Smith T, Croul S, Adeniyi A, Rybicka K, Morgello S, Khalili K, Rappaport J: **Macrophage/microglial accumulation and proliferating cell nuclear antigen expression in the central nervous system in human immunodeficiency virus encephalopathy.** *Am J Pathol* 2004, **164**:2089-2099.
 38. Takahashi K, Wesselingh SL, Griffin DE, McArthur JC, Johnson RT, Glass JD: **Localization of HIV-1 in human brain using polymerase chain reaction/in situ hybridization and immunocytochemistry.** *Ann Neurol* 1996, **39**:705-711.

39. Bell JE: **The neuropathology of adult HIV infection.** *Rev Neurol (Paris)* 1998, **154**:816-829.
40. An SF, Groves M, Giometto B, Beckett AA, Scaravilli F: **Detection and localisation of HIV-1 DNA and RNA in fixed adult AIDS brain by polymerase chain reaction/in situ hybridisation technique.** *Acta Neuropathol (Berl)* 1999, **98**:481-487.
41. Cosenza MA, Zhao ML, Si Q, Lee SC: **Human brain parenchymal microglia express CD14 and CD45 and are productively infected by HIV-1 in HIV-1 encephalitis.** *Brain Pathol* 2002, **12**:442-455.
42. Pulliam L, Gascon R, Stubblebine M, McGuire D, McGrath MS: **Unique monocyte subset in patients with AIDS dementia.** *Lancet* 1997, **349**:692-695.
43. Chang J, Jozwiak R, Wang B, Ng T, Ge YC, Bolton W, Dwyer DE, Randle C, Osborn R, Cunningham AL, Saksena NK: **Unique HIV type 1 V3 region sequences derived from six different regions of brain: region-specific evolution within host-determined quasispecies.** *AIDS Res Hum Retroviruses* 1998, **14**:25-30.
44. Wong JK, Ignacio CC, Torriani F, Havlir D, Fitch NJ, Richman DD: **In vivo compartmentalization of human immunodeficiency virus: evidence from the examination of pol sequences from autopsy tissues.** *J Virol* 1997, **71**:2059-2071.
45. Haggerty S, Stevenson M: **Predominance of distinct viral genotypes in brain and lymph node compartments of HIV-1-infected individuals.** *Viral Immunol* 1991, **4**:123-131.
46. Van't Wout AB, Ran LJ, Kuiken CL, Kootstra NA, Pals ST, Schuitemaker H: **Analysis of the temporal relationship between human immunodeficiency virus type 1 quasispecies in sequential blood samples and various organs obtained at autopsy.** *J Virol* 1998, **72**:488-496.
47. Salemi M, Lamers SL, Yu S, de Oliveira T, Fitch WM, McGrath MS: **Phylogenetic analysis of human immunodeficiency virus type 1 in distinct brain compartments provides a model for the neuropathogenesis of AIDS.** *J Virol* 2005, **79**:11343-11352.
48. Smit TK, Brew BJ, Tourtellotte W, Morgello S, Gelman BB, Saksena NK: **Independent evolution of human immunodeficiency virus (HIV) drug resistance mutations in diverse areas of the brain in HIV-infected patients, with and without dementia, on antiretroviral treatment.** *J Virol* 2004, **78**:10133-10148.
49. Chen H, Wood C, Petit CK: **Comparisons of HIV-1 viral sequences in brain, choroid plexus and spleen: potential role of choroid plexus in the pathogenesis of HIV encephalitis.** *J Neurovirol* 2000, **6**:498-506.
50. Gorry PR, Bristol G, Zack JA, Ritola K, Swanstrom R, Birch CJ, Bell JE, Bannert N, Crawford K, Wang H, Schols D, De Clercq E, Kunstman K, Wolinsky SM, Gabuzda D: **Macrophage tropism of human immunodeficiency virus type 1 isolates from brain and lymphoid tissues predicts neurotropism independent of coreceptor specificity.** *J Virol* 2001, **75**:10073-10089.
51. Gorry PR, Taylor J, Holm GH, Mehle A, Morgan T, Cayabyab M, Farzan M, Wang H, Bell JE, Kunstman K, Moore JP, Wolinsky SM, Gabuzda D: **Increased CCR5 affinity and reduced CCR5/CD4 dependence of a neurovirulent primary human immunodeficiency virus type 1 isolate.** *J Virol* 2002, **76**:6277-6292.
52. Peters PJ, Duenas-Decamp MJ, Sullivan WM, Brown R, Ankghuambom C, Luzuriaga K, Robinson J, Burton DR, Bell J, Simmonds P, Ball J, Clapham P: **Variation in HIV-1 R5 macrophage-tropism correlates with sensitivity to reagents that block envelope: CD4 interactions but not with sensitivity to other entry inhibitors.** *Retrovirology* 2008, **5**:5.
53. Thomas ER, Dunfee RL, Stanton J, Bogdan D, Taylor J, Kunstman K, Bell JE, Wolinsky SM, Gabuzda D: **Macrophage entry mediated by HIV Envs from brain and lymphoid tissues is determined by the capacity to use low CD4 levels and overall efficiency of fusion.** *Virology* 2007, **360**:105-119.
54. Mefford ME, Gorry PR, Kunstman K, Wolinsky SM, Gabuzda D: **Bioinformatic prediction programs underestimate the frequency of CXCR4 usage by R5X4 HIV type 1 in brain and other tissues.** *AIDS Res Hum Retroviruses* 2008, **24**:1215-1220.
55. Yi Y, Chen W, Frank I, Cutilli J, Singh A, Starr-Spires L, Sulcove J, Kolson DL, Collman RG: **An unusual syncytia-inducing human immunodeficiency virus type 1 primary isolate from the central nervous system that is restricted to CXCR4, replicates efficiently in macrophages, and induces neuronal apoptosis.** *J Neurovirol* 2003, **9**:432-441.
56. Sharkey M, Triques K, Kuritzkes DR, Stevenson M: **In vivo evidence for instability of episomal human immunodeficiency virus type 1 cDNA.** *J Virol* 2005, **79**:5203-5210.
57. Pierson TC, Kieffer TL, Ruff CT, Buck C, Gange SJ, Siliciano RF: **Intrinsic stability of episomal circles formed during human immunodeficiency virus type 1 replication.** *J Virol* 2002, **76**:4138-4144.
58. Gillim-Ross L, Cara A, Klotman ME: **HIV-1 extrachromosomal 2-LTR circular DNA is long-lived in human macrophages.** *Viral Immunol* 2005, **18**:190-196.
59. Ranki A, Nyberg M, Ovod V, Haltia M, Elovaara I, Raininko R, Haapasalo H, Krohn K: **Abundant expression of HIV Nef and Rev proteins in brain astrocytes in vivo is associated with dementia.** *AIDS* 1995, **9**:1001-1008.
60. Saito Y, Sharer LR, Epstein LG, Michaels J, Mintz M, Louder M, Golding K, Cvetkovich TA, Blumberg BM: **Overexpression of nef as a marker for restricted HIV-1 infection of astrocytes in postmortem pediatric central nervous tissues.** *Neurology* 1994, **44**:474-481.
61. Sharer LR, Saito Y, Epstein LG, Blumberg BM: **Detection of HIV-1 DNA in pediatric AIDS brain tissue by two-step ISPCR.** *Adv Neuroimmunol* 1994, **4**:283-285.
62. Tornatore C, Chandra R, Berger JR, Major EO: **HIV-1 infection of subcortical astrocytes in the pediatric central nervous system.** *Neurology* 1994, **44**:481-487.
63. Thompson KA, Churchill MJ, Gorry PR, Sterjovski J, Oelrichs RB, Wesselingh SL, McLean CA: **Astrocyte specific viral strains in HIV dementia.** *Ann Neurol* 2004, **56**:873-877.
64. Okoye A, Meier-Schellersheim M, Brenchley JM, Hagen SI, Walker JM, Rohankhedkar M, Lum R, Edgar JB, Planer SL, Legasse A, Sylwester AW, Piatak M Jr, Lifson JD, Maino VC, Sodora DL, Douek DC, Axthelm MK, Grossman Z, Picker LJ: **Progressive CD4+ central memory T cell decline results in CD4+ effector memory insufficiency and overt disease in chronic SIV infection.** *J Exp Med* 2007, **204**:2171-2185.
65. Dunfee RL, Thomas ER, Gorry PR, Wang J, Taylor J, Kunstman K, Wolinsky SM, Gabuzda D: **The HIV Env variant N283 enhances macrophage tropism and is associated with brain infection and dementia.** *Proc Natl Acad Sci USA* 2006, **103**:15160-15165.
66. Duenas-Decamp MJ, Peters P, Burton D, Clapham PR: **Natural resistance of human immunodeficiency virus type 1 to the CD4bs antibody b12 conferred by a glycan and an arginine residue close to the CD4 binding loop.** *J Virol* 2008, **82**:5807-5814.
67. Dunfee RL, Thomas ER, Wang J, Kunstman K, Wolinsky SM, Gabuzda D: **Loss of the N-linked glycosylation site at position 386 in the HIV envelope V4 region enhances macrophage tropism and is associated with dementia.** *Virology* 2007, **367**:222-234.
68. Duenas-Decamp MJ, Peters PJ, Burton D, Clapham PR: **Determinants flanking the CD4 binding loop modulate macrophage tropism of human immunodeficiency virus type 1 R5 envelopes.** *J Virol* 2009, **83**:2575-2583.
69. Dunfee RL, Thomas ER, Gabuzda D: **Enhanced macrophage tropism of HIV in brain and lymphoid tissues is associated with sensitivity to the broadly neutralizing CD4 binding site antibody b12.** *Retrovirology* 2009, **6**:69.
70. Westby M, Smith-Burchnell C, Mori J, Lewis M, Mosley M, Stockdale M, Dorr P, Ciarabella G, Perros M: **Reduced maximal inhibition in phenotypic susceptibility assays indicates that viral strains resistant to the CCR5 antagonist maraviroc utilize inhibitor-bound receptor for entry.** *J Virol* 2007, **81**:2359-2371.
71. Brown RJ, Peters PJ, Caron C, Gonzalez-Perez MP, Stones L, Ankghuambom C, Pondei K, McClure CP, Alemnji G, Taylor S, Sharp PM, Clapham PR, Ball JK: **Intercompartmental recombination of HIV-1 contributes to env intrahost diversity and modulates viral tropism and sensitivity to entry inhibitors.** *J Virol* 2011, **85**:6024-6037.
72. Musich T, Peters PJ, Duenas-Decamp MJ, Gonzalez-Perez MP, Robinson J, Zolla-Pazner S, Ball JK, Luzuriaga K, Clapham PR: **A conserved determinant in the V1 loop of HIV-1 modulates the V3 loop to prime low CD4 use and macrophage infection.** *J Virol* 2011, **85**:2397-2405.
73. Schnell G, Joseph S, Spudich S, Price RW, Swanstrom R: **HIV-1 replication in the central nervous system occurs in two distinct cell types.** *PLoS Pathog* 2011, **7**:e1002286.
74. Sterjovski J, Roche M, Churchill MJ, Ellett A, Farrugia W, Gray LR, Cowley D, Pombourios P, Lee B, Wesselingh SL, Cunningham AL, Ramsland PA, Gorry PR: **An altered and more efficient mechanism of CCR5 engagement contributes to macrophage tropism of CCR5-using HIV-1 envelopes.** *Virology* 2010, **404**:269-278.
75. Clapham PR, McKnight A: **Cell surface receptors, virus entry and tropism of primate lentiviruses.** *J Gen Virol* 2002, **83**:1809-1829.

76. Isaacman-Beck J, Hermann EA, Yi Y, Ratcliffe SJ, Mulenga J, Allen S, Hunter E, Derdeyn CA, Collman RG: **Heterosexual transmission of human immunodeficiency virus type 1 subtype C: Macrophage tropism, alternative coreceptor use, and the molecular anatomy of CCR5 utilization.** *J Virol* 2009, **83**:8208-8220.
77. Revilla A, Delgado E, Christian EC, Dalrymple J, Vega Y, Carrera C, Gonzalez-Galeano M, Ocampo A, de Castro RO, Lezaun MJ, Rodriguez R, Marino A, Ordóñez P, Cilla G, Cisterna R, Santamaria JM, Prieto S, Rakhmanova A, Vinogradova A, Rios M, Perez-Alvarez L, Najera R, Montefiori DC, Seaman MS, Thomson MM: **Construction and Phenotypic Characterization of HIV Type 1 Functional Envelope Clones of Subtypes G and F.** *AIDS Res Hum Retroviruses* 2011, **27**:889-901.
78. Keele BF, Giorgi EE, Salazar-Gonzalez JF, Decker JM, Pham KT, Salazar MG, Sun C, Grayson T, Wang S, Li H, Wei X, Jiang C, Kirchherr JL, Gao F, Anderson JA, Ping LH, Swanstrom R, Tomaras GD, Blattner WA, Goepfert PA, Kilby JM, Saag MS, Delwart EL, Busch MP, Cohen MS, Montefiori DC, Haynes BF, Gaschen B, Athreya GS, Lee HY, *et al*: **Identification and characterization of transmitted and early founder virus envelopes in primary HIV-1 infection.** *Proc Natl Acad Sci USA* 2008, **105**:7552-7557.
79. Takehisa J, Zekeng L, Ido E, Mboudjeka I, Moriyama H, Miura T, Yamashita M, Gurtler LG, Hayami M, Kaptue L: **Various types of HIV mixed infections in Cameroon.** *Virology* 1998, **245**:1-10.
80. Thompson JD, Gibson TJ, Plewniak F, Jeanmougin F, Higgins DG: **The CLUSTAL_X windows interface: flexible strategies for multiple sequence alignment aided by quality analysis tools.** *Nucleic Acids Res* 1997, **25**:4876-4882.
81. Tamura K, Peterson D, Peterson N, Stecher G, Nei M, Kumar S: **MEGA5: molecular evolutionary genetics analysis using maximum likelihood, evolutionary distance, and maximum parsimony methods.** *Mol Biol Evol* 2011, **28**:2731-2739.
82. Wei X, Decker JM, Liu H, Zhang Z, Arani RB, Kilby JM, Saag MS, Wu X, Shaw GM, Kappes JC: **Emergence of resistant human immunodeficiency virus type 1 in patients receiving fusion inhibitor (T-20) monotherapy.** *Antimicrob Agents Chemother* 2002, **46**:1896-1905.
83. Platt EJ, Wehrly K, Kuhmann SE, Chesebro B, Kabat D: **Effects of CCR5 and CD4 cell surface concentrations on infections by macrophagetropic isolates of human immunodeficiency virus type 1.** *J Virol* 1998, **72**:2855-2864.
84. O'Doherty U, Swiggard WJ, Malim MH: **Human immunodeficiency virus type 1 spinoculation enhances infection through virus binding.** *J Virol* 2000, **74**:10074-10080.
85. Guo J, Wang W, Yu D, Wu Y: **Spinoculation Triggers Dynamic Actin and Cofilin Activity That Facilitates HIV-1 Infection of Transformed and Resting CD4 T Cells.** *J Virol* 2011, **85**:9824-9833.
86. Nottingham QJ, Birch JB: **A semiparametric approach to analysing dose-response data.** *Stat Med* 2000, **19**:389-404.
87. Ritz C, Streibig JC: **Bioassay analysis using R.** *J Stat Softw* 2005, **12**:1-22.

doi:10.1186/1742-4690-9-20

Cite this article as: Gonzalez-Perez *et al*: Independent evolution of macrophage-tropism and increased charge between HIV-1 R5 envelopes present in brain and immune tissue. *Retrovirology* 2012 **9**:20.

**Submit your next manuscript to BioMed Central
and take full advantage of:**

- Convenient online submission
- Thorough peer review
- No space constraints or color figure charges
- Immediate publication on acceptance
- Inclusion in PubMed, CAS, Scopus and Google Scholar
- Research which is freely available for redistribution

Submit your manuscript at
www.biomedcentral.com/submit

