

May 2006

# Improving Access to Public Health Information: A Study of Information Needs in a State Health Department

E. Hatheway Simpson  
*University of Massachusetts Medical School*

Nancy R. LaPelle  
*University of Massachusetts Medical School*

Elaine Russo Martin  
*University of Massachusetts Medical School*

Follow this and additional works at: [http://escholarship.umassmed.edu/lib\\_articles](http://escholarship.umassmed.edu/lib_articles)

 Part of the [Library and Information Science Commons](#)

---

## Repository Citation

Simpson, E. Hatheway; LaPelle, Nancy R.; and Martin, Elaine Russo, "Improving Access to Public Health Information: A Study of Information Needs in a State Health Department" (2006). University of Massachusetts Medical School. *Library Publications and Presentations*. Paper 60.  
[http://escholarship.umassmed.edu/lib\\_articles/60](http://escholarship.umassmed.edu/lib_articles/60)

This material is brought to you by eScholarship@UMMS. It has been accepted for inclusion in Library Publications and Presentations by an authorized administrator of eScholarship@UMMS. For more information, please contact [Lisa.Palmer@umassmed.edu](mailto:Lisa.Palmer@umassmed.edu).

# **Improving Access to Public Health Information: A Study of Information Needs in a State Health Department**

E. Hatheway Simpson, MPH  
Nancy R. La Pelle, PhD  
Elaine R. Martin, DA

May 22, 2006

Medical Library Association Annual Meeting

Conducted by the University of Massachusetts Medical School Library  
Funded by the Centers for Disease Control and Prevention and the  
Association of Teachers of Preventive Medicine; Project #TS-0734



# Evidence-Based Practice for Public Health Project

---

- ❖ Evidence-based public health
  - Informed decisions for practice
- ❖ Information must be accessible
- ❖ What are the information needs and accessing preferences of the public health workforce?

# Qualitative Study Methods

---

## Study Sample:

19 Professionals at the Massachusetts  
Department of Public Health

- 12 - Bureau of Communicable Disease Control
- 7 – Division of Community Health Promotion

## Data Collection & Analysis

- Tape/transcribed key informant interviews & focus groups
- Thematic analysis of data; comparison across groups

# Questions Asked

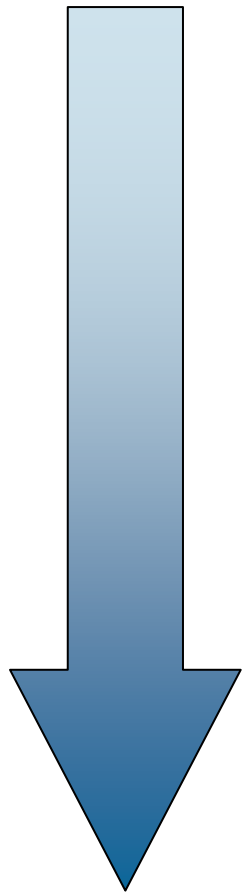
---

- ❖ Type of work tasks performed requiring access to information?
- ❖ Information sources currently used?
- ❖ Current limitations to information access?
- ❖ Preferred format and features for information access?

# Evidence-based Information Continuum

## *Different information sources for different needs*

Minimum



Maximum

1. Early alerts & reports	➤ Email, news media
2. Emerging & promising practices	➤ Conferences, listservs, informal networks
3. Evaluated practices & interventions	➤ Reports, websites, conferences
4. Reference Information	➤ Books, websites
5. Published research & systematic reviews	➤ PubMed, journals, article summaries
6. Evidence-based guidelines	➤ AHRQ, Institute of Medicine



Health & Safety Topics

- > [Birth Defects](#)
- > [Disabilities](#)
- > [Diseases & Conditions](#)
- > [Emergency Preparedness & Response](#)
- > [Environmental Health](#)
- > [Genetics and Genomics](#)
- > [Health Promotion](#)
- > [Injury and Violence](#)
- > [Travelers' Health](#)
- > [Vaccines & Immunizations](#)
- > [Workplace Safety & Health](#)

Publications & Products

- > [Emerging Infectious Diseases Journal](#)
- > [MMWR](#)
- > [Preventing Chronic Disease Journal](#)
- > [Public Health Image Library](#)
- > [Public Health Law News](#)
- > [more](#)

Data & Statistics



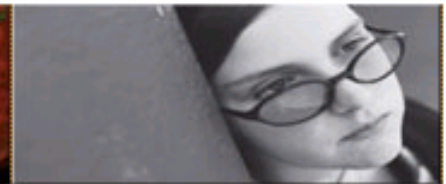
### Raising Healthy Kids

Public Health - See what CDC is doing to promote healthy communities... [more](#)



### Pandemic Flu

Pandemic Flu resources... [more](#)



### Child Abuse

Child abuse and neglect can lead to health problems throughout life... [more](#)

### [Autism and Vaccines](#)

Learn more about Research on Vaccines & Autism ...[more](#)

### [Autism Spectrum Disorders](#)

Learn more about Autism ...[more](#)

### [Avian Influenza](#)

Latest information on bird flu ...[more](#)

### [CDC Partnerships](#)

A new portal with information and resources for CDC's partners ...[more](#)

### [Spring Break Guide to Staying Safe and Healthy](#)

Make your spring break memorable by having fun and helping yourself, your friends, and others stay safe and healthy. [more](#)

### Programs & Campaigns

#### [National Diabetes Education Program](#)

Partners work together to improve the treatment and outcomes of diabetes.

#### [Family History Initiative](#)

This evaluates how family history can assess common diseases risk and influence early detection and prevention strategies.

**Challenges & limitations** to public health information access

**Strategies** to meet the **needs** of the public health workforce





## Challenge:

- ❖ Too many sources to search efficiently
- ❖ Too much irrelevant information



## Need:

- ❖ One portal access to PH information
- ❖ Mediated searching & article retrieval services
- ❖ Training on accessing and selecting PH resources



# Partners

in Information Access for  
the Public Health Workforce

A collaboration of U.S. government agencies, public health organizations and health sciences libraries

Search:

go

[Home](#) | [News](#) | [About Partners](#) | [Sitemap](#) | [Suggest Link](#)

## Our Mission

Helping the public health workforce find and use information effectively to improve and protect the public's health

## Main Topics:

- ▶ [Health Promotion and Health Education](#)
- ▶ [Literature and Guidelines](#)
- ▶ [Health Data Tools and Statistics](#)
- ▶ [Grants and Funding](#)
- ▶ [Education and Training](#)
- ▶ [Legislation and Policy](#)
- ▶ [Conferences and Meetings](#)
- ▶ [Finding People](#)
- ▶ [Discussion and E-mail Lists](#)
- ▶ [Jobs and Careers](#)

### What's New on PHPartners.org?

Subscribe to the weekly announcement-only list of new resources

### Public Health Information and Data:

[Tutorial](#)

[Training Manual](#)

### Research

is just  
a click away...



### Resource Guide

for Public Health  
Preparedness

Role of Information Services for  
Emergency Preparedness and  
Response Symposium  
MLA'05: CE 800

[Presentations and Resource links](#)

## Latest News

[Dr. Paul E. Jarris Named  
ASTHO Executive Director](#)

[Rate of Pneumococcal  
Disease in Young Infants  
Drops After Introduction of  
Pneumococcal Vaccine for  
Older Infants](#)

[Bills Would Tighten Ban on  
Junk Food in Schools](#)

▶▶ [more news](#)

## Hurricane Katrina:

[Links to Health Information](#)

## Partners:

[Agency for Healthcare Research and Quality \(AHRQ\)](#) ♦ [American Public Health Association \(APHA\)](#) ♦ [Association of Schools of Public Health \(ASPH\)](#) ♦ [Association of State and Territorial Health Officials \(ASTHO\)](#) ♦ [Centers for Disease Control and Prevention \(CDC\)](#) ♦ [Health Resources and Services Administration \(HRSA\)](#) ♦ [Medical Library Association \(MLA\)](#) ♦ [National Association of County and City Health Officials \(NACCHO\)](#) ♦ [National Library of Medicine \(NLM\)](#) ♦ [National Network of Libraries of Medicine \(NN/LM\)](#) ♦ [Public Health Foundation](#) ♦ [Society for Public Health Education](#) ♦



Search:


go

[HP2010 IAP Home](#) | [Partners Home](#) | [Suggest Link](#)

## Diabetes

---

[Search by Focus Area](#) | [About this Project](#) | [Tips on Searching](#) | [Give Us Feedback](#) | [Contributors](#)

Click the  button to run the search in PubMed.



[Link to the complete Healthy People 2010 Chapter.](#)



Prevent Diabetes. ([Objective 05-02](#))



Increase the proportion of adults with diabetes whose condition has been diagnosed. ([Objective 05-04](#))



Reduce diabetes-related deaths among persons with diabetes. ([Objective 05-06](#))



Decrease the proportion of pregnant women with gestational diabetes. ([Objective 05-08](#))



Reduce the frequency of foot ulcers in persons with diabetes. ([Objective 05-09](#))



Increase the proportion of adults with diabetes who perform self-blood-glucose-monitoring at least once daily. ([Objective 05-17](#))

## Related Resources

- [Guide to Community Preventive Services. TOPICS: Diabetes and Physical Activity](#)
- [MEDLINEplus - Diabetes](#)
- [MEDLINEplus - Diabetes and Pregnancy](#)
- [MEDLINEplus - Diabetic Diet](#)
- [MEDLINEplus - Diabetic Foot](#)
- [Screening for Type 2 Diabetes Mellitus. Guide to Clinical Preventive Services, 3rd ed.](#)

**NCBI**

All Databases

Search PubMed

Limits

Display

All: 85

1: N

2: V

3: E

4: Y

Entrez PubMed  
Overview  
Help | FAQ  
Tutorials  
New/Noteworthy  
E-Utilities

PubMed Services  
Journals Database  
MeSH Database  
Single Citation  
Matcher  
Batch Citation Matcher  
Clinical Queries  
Special Queries  
LinkOut  
My NCBI

Related Resources  
Order Documents

My NCBI: Sign In

Sign in here or [register for an account.](#)

User Name

Password

Keep me signed in unless I sign out  
*Leave unchecked on public computers*

[I forgot my password](#)  
[About automatic sign in](#)

**What is My NCBI?**

**My NCBI** is a central place to customize NCBI Web services. To use it, you must first [register](#), and your browser must accept [cookies](#).

You can use **My NCBI** to:

- Save searches
- Set up e-mail alerts for new content
- Display links to Web resources (LinkOut)
- Choose filters that group search results

Like all NCBI resources, **My NCBI** is free. For more information, read [My NCBI Help](#). You may also read [about your privacy](#).

Options

My [Sign In]

OMIM PMC Journals

Search

Page 1

Related

vention.

Related

Related

randomized controlled trials.

Related

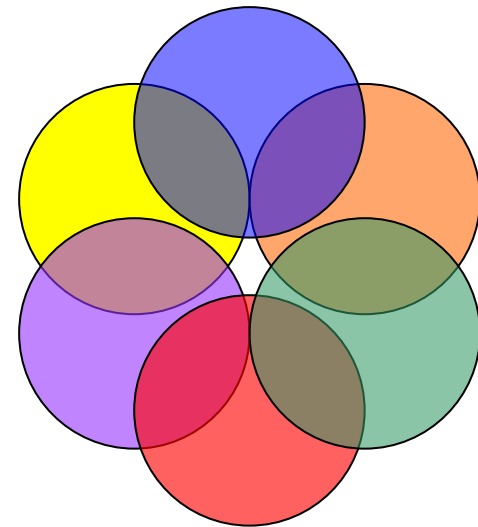
ostinence in Louisiana.

## Challenge:

- ❖ Gaps in public health information
- ❖ Difficulty accessing information beyond biomedical field – beyond PubMed

## Need:

- ❖ Access to information from multiple disciplines



## Challenge - limited access to:

- ❖ Full-text journals
- ❖ Unpublished research
- ❖ Systematic reviews and summaries with practice recommendations

## Need access to:

- ❖ **Free** full-text journals
- ❖ Grey literature & conference proceedings
- ❖ Systematic reviews and evidence-based guidelines related to public health

**GUIDE TO**

# COMMUNITY

## Preventive Services

SYSTEMATIC REVIEWS AND EVIDENCE BASED RECOMMENDATIONS

### Become Involved

[Send comments and suggestions](#)

[Home](#)

[About Us](#)

[The Task Force](#)

[Overview](#)

[Topics](#)

[Alcohol](#)

[Cancer](#)

[Mental Health](#)

[Diabetes](#)

[Substance Abuse](#)

[Motor Vehicle](#)

[Nutrition](#)

[Obesity](#)

[Oral Health](#)

[Physical Activity](#)

[Pregnancy](#)

[Tobacco](#)

[Sexual Behavior](#)

[Social Environment](#)

[Vaccines](#)

[Violence](#)

[Library](#)

Articles, Slide Sets, etc.

[Methods](#)

[Economic Findings](#)

[Links](#)

Site Search

[Search](#)

### In The Spotlight:

The Guide to Community Preventive Services is now available in book form.

[Get your copy at a 15% discount.](#)  
[Or read individual chapters here](#)

[America's Health: State Health Rankings – 2004 Edition](#)

### The Community Guide [at a Glance](#)

#### [Recommendations by Topic](#)

***Changing Health Risk Behaviors***

[Physical Activity](#)

[Tobacco Product Use](#)

[Nutrition](#)

[Sexual Behavior](#)

[Alcohol Abuse](#)

***Addressing the Environment***

[Social Environment](#)

[Información en Español](#)

***Addressing Specific Health Conditions***

[Cancer](#)

[Diabetes](#)

[Mental Health](#)

[Motor Vehicle Occupant Injury](#)

[Obesity](#)

[Oral Health](#)

[Vaccine Preventable Diseases](#)

[Violence](#)



You are not currently logged in

[Sign Up](#) | [Browse](#) | [Search](#) | [Login](#) | [Home](#) | [About Us](#) | [How To Use This Site](#) | [Additional Resources](#) | [Contact Us](#) | [French](#)

[Browse](#)

[Search](#)

[Start](#)

- [addiction/drug use](#)
- [adolescent health](#)
- [adult health](#)
- [child health](#)
- [chronic diseases](#)
- [communicable disease & infection](#)
- [community health](#)
- [dental health](#)
- [elderly health](#)
- [environmental health](#)
- [food safety & inspection](#)
- [infant health](#)
- [injury prevention & safety](#)
- [mental health](#)
- [nutrition](#)
- [parenting/infants & children](#)

#### ▶ Most Popular References...

- ▶ [Q15783 - Day care for pre-school children](#) modified: 6/2/11
- ▶ [Q15782 - The health and welfare effects of day-care: A systematic review of randomized controlled trials](#) modified: 6/2/11
- ▶ [Q15329 - Interventions for preventing obesity in children](#) modified: 6/2/11
- ▶ [Q15345 - Effectiveness of community-based interventions to increase fruit and vegetable consumption](#) modified: 6/2/11
- ▶ [Q16121 - Effectiveness of physical activity enhancement and obesity prevention programs in children and youth](#) modified: 6/2/11

#### ▶ Latest Additions...

- ▶ [Q16153 - Intervention programs for arthritis and other rheumatic diseases](#) modified: 8/24/11
- ▶ [Q15457 - The efficacy of influenza vaccine in elderly persons: A meta-analysis and review of the literature](#) modified: 8/24/11
- ▶ [Q15513 - Is dental health education effective? A systematic](#) modified: 8/24/11



# Evidence-Based Practice for Public Health Project Web Site:

<http://library.umassmed.edu/ebpph>



**The Lamar Soutter Library**  
University of Massachusetts Medical School

[Home](#)

[Library Catalogs](#)

[About the Library](#)

[Ask a Librarian](#)

[Search the Web](#)

[Request Forms](#)

Knowledge  
Domains of  
Public Health

Public Health  
Journals

Public Health  
Databases

Evidence-  
Based  
Resources

Partners in  
Information  
Access for the  
Public Health  
Workforce

## Evidence-Based Practice for Public Health Project

### Overview

There are numerous clinically based models for finding the "best evidence" for the diagnosis and treatment of disease. This process is called **Evidence-based Medicine** or **EBM**, which has been defined as "the conscientious, explicit, and judicious use of current best evidence in making decisions about the care of individual patients. The practice of evidence-based medicine means integrating individual clinical expertise with the best available external clinical evidence from systematic research" (Sackett DL, Rosenberg WMC, Gray JAM, Haynes RB, Richardson WS. Evidence based medicine: what it is and what is isn't. BMJ 1996; 312: 71-2). Within the EBM models, there is no or little attention paid to the "best practices" for population-based (public) health. The purpose of this project is to **examine the clinical EBM models and assess their effectiveness to the public health literature**. The project will also identify any existing evidence-based projects in public health and assess their effectiveness. The outcomes of the project will be:

1. An Evidence-based Public Health website;
2. An electronic publication or database based on the preferred models(s);
3. A training program for public health practitioners introducing them to evidence-based public health practice and literature retrieval methods.

### Funding

The Evidence-Based Practice for Public Health Project is funded by an award from the [Association of Teachers of Preventive Medicine / Centers of Disease Control and Prevention](#) Cooperative Agreement to the [Lamar Soutter Library](#) at the University of Massachusetts Medical School.

### Objectives

- Identify the knowledge domains of public health and their corresponding literature.
- Identify at least three models of evidence-based literature approaches to clinical medicine and review their applicability to the literature of public

# EBPPH Project Web Site:

<http://library.umassmed.edu/ebpph>

## Evidence-Based Resources for Public Health Practice Available for Free Online Access

### Evidence-based Guidelines

- United States
  - [CDC Recommends: The Prevention Guidelines System](#) (Centers for Disease Control and Prevention)
  - [Guide to Clinical Preventive Services](#) (U.S. Preventive Services Task Force)
  - [Guide to Community Preventive Services](#) (Task Force on Community Preventive Services)
  - [MMWR Recommendations and Reports](#) (Centers for Disease Control and Prevention)
  - [National Guideline Clearinghouse](#) (Agency for Healthcare Research and Quality)

### Systematic Reviews

- United States
  - [PubMed Systematic Reviews](#) (National Library of Medicine)
  - [Healthy Aging Initiative - Evidence Reports](#) (Centers for Medicare & Medicaid Services)
- International
  - [Cochrane Database of Systematic Reviews, Abstracts](#) (Cochrane Collaboration)
  - [Cochrane Reviews of Relevance to Health Promotion and Public Health](#) (Cochrane Health Promotion and Public Health Field)
  - [DARE \(Database of Abstracts of Reviews of Effects\)](#) (Centre for Reviews and Dissemination, University of York, UK)
  - [The Effective Public Health Practice Project](#) (Ministry of Health and Long-Term Care and the City of Hamilton, Public Health and Community Services)
  - [EPPI \(Evidence for Practice and Policy Information\) Centre](#) (Social Science Research Unit, Institute of Education, University of London, UK)
  - [Evidence Based Health Promotion](#) (Victorian State Government, Department of Human Services, Australia)
  - [Health Development Agency Evidence Base](#) (Health Development Agency, UK)
  - [Health Evidence Bulletins Wales](#) (Duthie Library, University of Wales College of Medicine, Cardiff, UK)
  - [Health-Evidence.ca](#) (Canadian Institutes of Health Research)

### Pre-formulated and Filtered Searches of Published Research Studies

- United States
  - [Healthy People 2010 Information Access Project](#) (National Library of Medicine and the Public Health Foundation)
  - [PubMed Clinical Queries](#) (National Library of Medicine)
  - [PubMed Health Services Research \(HSR\) Queries](#) (National Library of Medicine)

### Best Practices (Experience-Based)

- United States

# Responding to the Need

---

- ❖ Expert searching and article retrieval services
- ❖ One portal access to:
  - Free public health journals
  - Free public health bibliographic databases
  - Evidence-based public health resources
- ❖ Training on finding resources for EBPH

# Contact

[Hathy.Simpson@umassmed.edu](mailto:Hathy.Simpson@umassmed.edu)

Evidence-Based Practice for Public Health

<http://library.umassmed.edu/ebpph>

## Published Paper:

Lapelle NR, Luckmann R, Simpson EH, Martin ER. Identifying strategies to improve access to credible and relevant information for public health professionals: a qualitative study. *BMC Public Health*. 2006 Apr 5;6(1):89.