

12-15-2016

CTCF-mediated topological boundaries during development foster appropriate gene regulation

Varun Narendra

Howard Hughes Medical Institute

Milica Bulajic


New York University

Job Dekker

University of Massachusetts Medical School

See next page for additional authors

Follow this and additional works at: http://escholarship.umassmed.edu/sysbio_pubs

 Part of the [Biochemistry Commons](#), [Computational Biology Commons](#), [Developmental Biology Commons](#), [Genomics Commons](#), [Molecular Biology Commons](#), [Structural Biology Commons](#), and the [Systems Biology Commons](#)

Repository Citation

Narendra, Varun; Bulajic, Milica; Dekker, Job; Mazzoni, Esteban O.; and Reinberg, Danny, "CTCF-mediated topological boundaries during development foster appropriate gene regulation" (2016). *Program in Systems Biology Publications and Presentations*. 95.
http://escholarship.umassmed.edu/sysbio_pubs/95

This material is brought to you by eScholarship@UMMS. It has been accepted for inclusion in Program in Systems Biology Publications and Presentations by an authorized administrator of eScholarship@UMMS. For more information, please contact Lisa.Palmer@umassmed.edu.

CTCF-mediated topological boundaries during development foster appropriate gene regulation

Authors

Varun Narendra, Milica Bulajic, Job Dekker, Esteban O. Mazzoni, and Danny Reinberg

Keywords

CTCF, Hox gene regulation, Polycomb/Trithorax, TADs, chromatin and epigenetics, chromosomal conformation

Creative Commons License



This work is licensed under a [Creative Commons Attribution-Noncommercial 4.0 License](https://creativecommons.org/licenses/by-nc/4.0/)

Rights and Permissions

© 2016 Narendra et al. This article is distributed exclusively by Cold Spring Harbor Laboratory Press for the first six months after the full-issue publication date (see <http://genesdev.cshlp.org/site/misc/terms.xhtml>). After six months, it is available under a Creative Commons License (Attribution-NonCommercial 4.0 International), as described at <http://creativecommons.org/licenses/by-nc/4.0/>.

RESEARCH COMMUNICATION

CTCF-mediated topological boundaries during development foster appropriate gene regulation

Varun Narendra,^{1,2} Milica Bulajić,³ Job Dekker,^{1,4} Esteban O. Mazzoni,³ and Danny Reinberg^{1,2}

¹Howard Hughes Medical Institute, New York, New York 10016, USA; ²Department of Biochemistry and Molecular Pharmacology, New York University School of Medicine, New York, New York 10016, USA; ³Department of Biology, New York University, New York, New York 10003, USA; ⁴Program in Systems Biology, Department of Biochemistry and Molecular Pharmacology, University of Massachusetts Medical School, Worcester, Massachusetts 01605, USA

The genome is organized into repeating topologically associated domains (TADs), each of which is spatially isolated from its neighbor by poorly understood boundary elements thought to be conserved across cell types. Here, we show that deletion of CTCF (CCCTC-binding factor)-binding sites at TAD and sub-TAD topological boundaries that form within the *HoxA* and *HoxC* clusters during differentiation not only disturbs local chromatin domain organization and regulatory interactions but also results in homeotic transformations typical of *Hox* gene misregulation. Moreover, our data suggest that CTCF-dependent boundary function can be modulated by competing forces, such as the self-assembly of polycomb domains within the nucleus. Therefore, CTCF boundaries are not merely static structural components of the genome but instead are locally dynamic regulatory structures that control gene expression during development.

Supplemental material is available for this article.

Received July 31, 2016; revised version accepted December 12, 2016.

Precise control of gene expression ensures correct embryonic development. Gene regulation is established by a nested organization of the genome in space, ranging from dynamic local DNA loops to large-scale topologically associated domains (TADs) (Dixon et al. 2012; Nora et al. 2012). Within this hierarchical organization, conserved TAD and sub-TAD structures frame the majority of enhancer–promoter interactions (Dekker et al. 2013; Tang et al. 2015; Dekker and Mirny 2016). The CCCTC-binding factor (CTCF) regulates each nested level of genomic organization (Guo et al. 2015; Hnisz et al. 2016), from local enhancer–promoter looping events within the proto-cadherin clusters to broader genomic neighborhoods and TADs (Guo et al. 2012; Rao et al. 2014).

[**Keywords:** CTCF; chromatin and epigenetics; *Hox* gene regulation; Polycomb/Trithorax; TADs; chromosomal conformation]
Corresponding authors: danny.reinberg@nyumc.org, com204@nyu.edu
 Article is online at <http://www.genesdev.org/cgi/doi/10.1101/gad.288324>.
 116.

Although a macroscopic megabase-scale view of TADs suggests that their genomic position is robustly conserved across cell types, TAD and sub-TAD boundaries can be rather dynamic at a local kilobase level such that they are repositioned in distinct cell types during development to orchestrate local cell type-specific genomic contacts. Although sub-TADs have been shown specifically to be dynamic during differentiation, regulatory mechanisms underlying these dynamics remain poorly understood. Here, we used the model system of motor neuron (MN) differentiation to study CTCF-dependent TAD and sub-TAD boundaries that fall within the *Hox* clusters and determine how they play cell type-specific roles in controlling chromatin interactions for individual *Hox* genes and *Hox* expression during development. By using 5C (chromosome conformation capture carbon copy) to analyze the allocation of *Hox* genes into different topological domains during MN differentiation, we demonstrate that TAD and sub-TAD boundaries are not rigid in their genomic position. Rather, they can be flexible in the extent to which they block or permit cell type-specific chromatin interactions and gene expression. Furthermore, by deleting CTCF-binding sites within the *Hox* clusters, we show that TAD boundaries are formed by the long-range self-assembly of CTCF molecules in space. We also provide data suggesting that their cell type specificity may arise from rearrangements in local chromatin structure that allow for different patterns and insulation capacity of long-range CTCF interactions. Genetic disruption of these mechanisms manifests as homeotic transformations typical of *Hox* gene misregulation, including defects in axial skeletal patterning in vivo and MN subtype specification in vitro.

Results and Discussion

In vertebrates, paralogous families of *Hox* genes are densely distributed across four clusters (*HoxA*, *HoxB*, *HoxC*, and *HoxD*), the expression of which is controlled by short- and long-range DNA looping (Duboule 2007; Maeda and Karch 2009; Montavon et al. 2011; Lonfat et al. 2014). Thus, cluster positioning relative to TAD structure has the potential to reduce or facilitate the association of long-distance regulatory regions and *Hox* genes. While both the *HoxA* and *HoxC* clusters are able to fold within local sub-TAD conformations, they do not occupy a consistent position within the larger TAD structure. Analysis of available Hi-C (chromosome capture followed by high-throughput sequencing) data shows that, while the *HoxC* cluster lies entirely within a TAD, the *HoxA* cluster intersects a TAD boundary in embryonic stem cells (ESCs) (Supplemental Fig. S1A,B; Dixon et al. 2012; Lonfat and Duboule 2015). However, the precise region of this intersection remains unclear given the limited resolution of Hi-C. Thus, we performed comprehensive 5C across a 4-Mb region spanning the *HoxA* cluster to define its

© 2016 Narendra et al. This article is distributed exclusively by Cold Spring Harbor Laboratory Press for the first six months after the full-issue publication date (see <http://genesdev.cshlp.org/site/misc/terms.xhtml>). After six months, it is available under a Creative Commons License (Attribution-NonCommercial 4.0 International), as described at <http://creativecommons.org/licenses/by-nc/4.0/>.

location within the context of TADs (Fig. 1A). We did so in MNs derived from wild-type mouse ESCs, as we had already developed 4C (circularized chromatin conformation capture) maps of the local topology and chromatin structure of the *Hox* loci for these cells (Mazzoni et al. 2013; Narendra et al. 2015). TAD boundaries were determined by calculating an “insulation score” at each position along the 4-Mb scan, which reflects the aggregate of interactions (within an ~160-kb window) occurring across each genomic position (Crane et al. 2015). Local minima of the insulation profile denote areas of high insulation or TAD boundaries. Visual inspection of the 5C interaction map and the associated insulation profile reveals at least 10 TAD boundaries, with possibly weaker boundaries present as well (Fig. 1A,B). These data are highly reproducible, as an independent biological 5C replicate reveals

the equivalent chromosomal structure (Supplemental Fig. S2A,B). Interestingly, in MNs, the boundary between two of these TADs intersects the *HoxA* cluster near the CTCF motif located between *Hoxa5* and *Hoxa6* (a5|6), aligning exactly with the boundary between adjacent active and repressed chromatin domains that is formed within the cluster during MN differentiation (Fig. 1C; Supplemental Fig. S2C). This is in contrast to ESCs, in which the TAD boundary localizes roughly to a10|11 (Fig. 1B,C; Supplemental Fig. S2B,C), suggesting that the precise positioning of TAD boundaries is locally dynamic during differentiation. Each of these boundaries engages in long-range looping interactions that are present in both ESCs and MNs, consistent with the fact that both cell types have the same CTCF-binding profile. These are identified as corner peaks within the 5C heat map

(Fig. 1A; Supplemental Fig. S2A, green arrows). Of note, CTCF-binding events not only are found precisely at these long-range interaction sites but are positioned in a convergent orientation with respect to a5|6, as required for a loop extrusion model for their interaction (Fig. 1B, bottom; Supplemental Fig. S2B). Although present, the long-range interactions with a5|6 are altered and weaker in undifferentiated ESCs (Supplemental Fig. S3, blue arrows). Meanwhile, the a5|6 CTCF site allows for significant interactions to occur across it in ESCs, unlike the case in MNs (Supplemental Figs. S3, S4A; Narendra et al. 2015). Here, the pattern and insulation strength of CTCF-mediated loops are cell type-specific despite the fact that CTCF binding within the *HoxA* cluster is unchanged between ESCs and MNs (Fig. 1C). These findings suggest that although CTCF is capable of making all of the requisite spatial contacts needed to form a TAD boundary in ESCs, its capacity for local insulation on the ~100-kb scale is quantitatively different in ESCs and MNs. One possibility is that this is related to the presence of polycomb complex binding on either side of the a5|6 position in ESCs (Fig. 1C). We suggest that the property of polycomb to compact chromatin and self-aggregate into spatial hubs within the nucleus is sufficient to override CTCF-dependent insulation. Taken together, CTCF seems to landmark potential boundary regions of the cluster in both ESCs and MNs and engages in long-range interactions with other CTCF sites in both cell lines. However, the boundary activity of any given CTCF site is tunable, as demonstrated by the increased TAD boundary activity in MNs. As cells differentiate and as the local chromatin and regulatory landscape at CTCF boundaries changes, the range and stability of long-range looping events

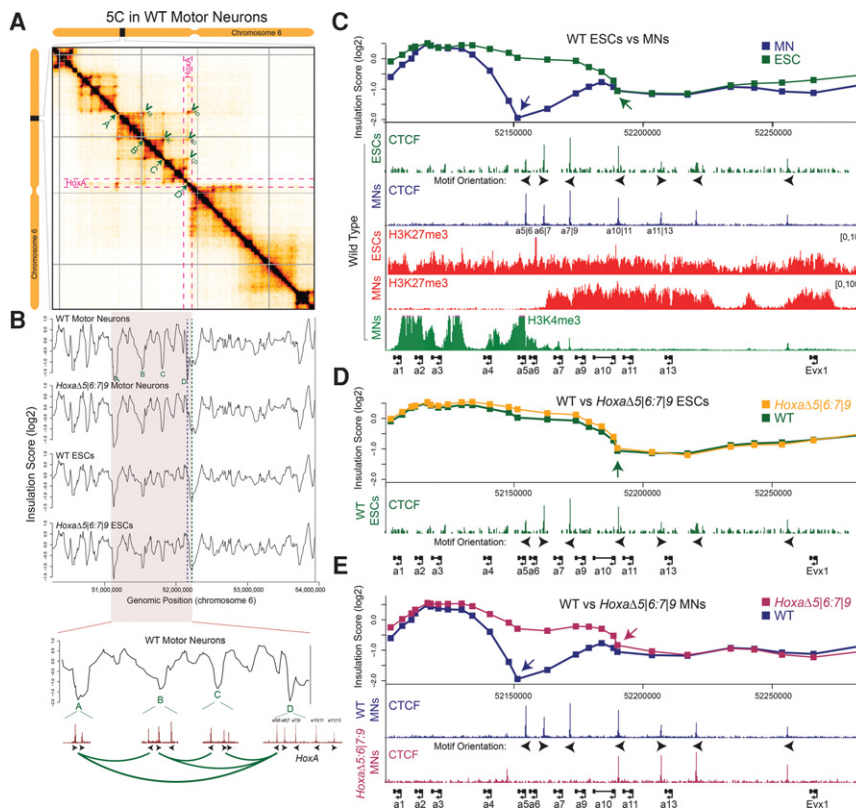


Figure 1. CTCF underlies the dynamic TAD boundaries during differentiation. (A) The 5C chromatin interaction heat map for wild-type MN cells depicts the interaction frequency between restriction fragments across a 4-Mb region surrounding the *HoxA* cluster (data were binned in 15-kb windows; step size 5 kb, the median is shown). Darker colors represent increasing interaction frequency. Gray lines represent missing data. The dotted magenta line bounds the extent of the *HoxA* cluster within the heat map. Topological boundaries within the region of the genome that form loops to interact with the a5|6 position are labeled in green. (B) Insulation profiles (\log_2) of wild-type and *Hoxa* Δ 5|6:7|9 ESCs and MNs. The dotted blue line indicates the TAD boundary present in wild-type MNs at the a5|6 position. The dotted green line indicates the TAD boundary present in *Hoxa* Δ 5|6:7|9 MNs near the a10|11 position, which also matches the boundary found in wild-type and *Hoxa* Δ 5|6:7|9 ESCs. The genomic region that interacts with the *HoxA* cluster is highlighted, and the associated insulation profile is magnified below. CTCF-binding profiles within TAD boundaries are displayed, along with motif orientation. Convergent motifs point toward each other, and the corner peaks identified in the 5C heat map are represented by green loops. (C–E) ChIP-seq [chromatin immunoprecipitation [ChIP] sequencing] tracks for the indicated proteins and histone modifications across the *HoxA* cluster in the indicated cell types and genetic backgrounds. ChIP-seq data were obtained from GSE60232 (Narendra et al. 2015). Insulation scores (\log_2), as calculated in B, are depicted above. Blue and green arrows point to TAD boundary positions within the *HoxA* cluster, which lie at the minima of the insulation score. The relative orientations of the CTCF motifs within the *HoxA* cluster are displayed.

with other CTCF sites can be very dynamic between cell types (Vieux-Rochas et al. 2015).

To formally demonstrate that CTCF-mediated looping events regulate TAD reorganization during development, we performed 5C before and after MN differentiation of ESCs in which the CTCF-binding sites between *Hoxa5* and *Hoxa6* (*HoxaΔ5|6*) and *Hoxa7* and *Hoxa9* (*HoxaΔ7|9*) were both mutated (*HoxaΔ5|6:7|9*) (Supplemental Fig. S5A). This causes a loss of the a6|7-binding event as well; thus, these cells lack three consecutive CTCF-binding events at the *HoxA* cluster (Fig. 1E). Although the loss of CTCF binding in ESCs results in a slightly increased interaction frequency within the rostral segment of the *HoxA* cluster and a mild increase in interactions across the sites over larger distances (Supplemental Fig. S4B), the TAD boundary position at a10|11 remains unchanged (Fig. 1D; Supplemental Fig. 2D). Upon differentiation into MNs, however, CTCF binding at a5|6, a6|7, and a7|9 is required for the precise positioning of a strong TAD boundary. While the remaining TAD boundaries are intact, the single TAD boundary between *Hoxa5* and *Hoxa6* is now absent in *HoxaΔ5|6:7|9* MNs (Fig. 1E; Supplemental Fig. 2E). Instead, the rostral TAD extends to the new topological boundary roughly between *Hoxa10* and *Hoxa11*, in accordance with the aberrant transcriptional activation of *Hoxa7*, *Hoxa9*, and *Hoxa10* observed previously in these cells (Narendra et al. 2015). Indeed, the orientation of the a10|11 CTCF-binding motif is equivalent to that of a5|6, allowing it to function as a new TAD anchor point. Together these results show that CTCF-binding sites a5|6, a6|7, and a7|9 display cell type-specific quantitative differences in boundary activity: A weak boundary is formed in ESCs, while the same sites form a strong boundary in MNs.

Showing that CTCF mediates long-distance interactions in both cell types, we found that, in both *HoxaΔ5|6:7|9* ESCs and MNs, several specific looping interactions detected as corner peaks that engage with CTCF at a5|6 are lost (Supplemental Fig. S3, blue arrows). To quantitatively demonstrate this, we calculate the change in 5C interaction frequencies between wild-type and *HoxaΔ5|6:7|9* ESCs and MNs. In both cell types, we observed vertical and horizontal blue lines that project onto the a5|6:a7|9 region. This linear pattern of differential interaction frequency along the boundary of the *HoxA*-intersecting TAD signifies a loss of CTCF-mediated looping events that may have formed via a loop extrusion model (Supplemental Fig. S4). Interestingly, the *HoxaΔ5|6:7|9* deletion has a more profound effect on CTCF-mediated looping in MNs than in ESCs (Supplemental Fig. S4), in agreement with the model that *HoxA* CTCF sites are commissioned in MNs to engage in long-range interactions and less so in ESCs, where these CTCF-binding events are buried within a compact polycomb domain. Further underscoring the importance of CTCF to the structural integrity of TADs, we observed substantially diminished insulation across the *HoxA* TAD boundary in *HoxaΔ5|6:7|9* cells (Supplemental Fig. S4, rectangular regions of increased [red] interaction frequency). Combined, these results reveal that the a5|6:a7|9 CTCF sites play a complex role in higher-order chromatin organization by looping to other CTCF sites in both cell types but with different patterns and frequencies and by displaying cell type-specific quantitative differences in boundary strength.

The dynamic nature of TAD boundaries across the *HoxA* cluster suggests that these structures play a critical role in regulating developmental gene expression. *Hox*

regulation of MN subtype identity presents a natural system in which to test the developmental relevance of TAD boundary dynamics. The generation of distinct MN subtype identities along the spinal cord during development necessitates precise transcription profiles from the *Hox* clusters, with genes from the *HoxC* cluster dominating this patterning (Beuchle et al. 2001). Ectopic expression of a single *Hox* gene, *Hoxc6*, within the thoracic spinal cord is sufficient to induce an ectopic limb-innervating lateral motor column (LMC) fate to developing MNs by inducing the expression of the transcription factor *Foxp1* (Dasen et al. 2008; Rouso et al. 2008). Similar to the *HoxA* setting, we previously identified a CTCF-binding site between *Hoxc5* and *Hoxc6* (c5|6) that, upon deletion, results in ectopic *Hoxc6* expression during differentiation (Supplemental Fig. S5B; Narendra et al. 2015). Although a TAD boundary has not been assigned in the literature to intersect the *HoxC* cluster (Supplemental Fig. S1B), the remarkably similar behavior of the *HoxaΔ5|6* and *HoxcΔ5|6* mutants argues that these boundaries function quite similarly. By differentiating *HoxaΔ5|6* and *HoxcΔ5|6* cells (which harbor single 5|6 CTCF deletions in the *HoxA* and *HoxC* clusters, respectively), we could then test whether misallocation of *HoxA* or *HoxC* genes across CTCF-delimited topological boundaries would alter transcriptional output to an extent sufficient to encroach on MN subtype identity during in vitro differentiation.

The cervical-to-brachial transition along the rostro-caudal spinal cord axis is controlled by the expression of *Hox6* paralogs that instruct a fraction of brachial MNs to become limb-innervating LMC MNs expressing *Raldh2* and *Foxp1* (Dasen et al. 2008; Rouso et al. 2008). To test whether aberrant *Hox6* expression in the *HoxaΔ5|6* and *HoxcΔ5|6* cells results in MN caudalization, we measured the mRNA levels of *Raldh2* and *Foxp1*. Under the conditions used to differentiate ESCs in vitro, all mutant and wild-type cell lines differentiate equally well into MNs, with ~40% of cells expressing the MN marker *Isl1|2* (wild type: 43%; *HoxaΔ5|6*: 42%; and *HoxcΔ5|6*: 43% of total cells). Wild-type cells activate rostral *Hox* gene expression during in vitro differentiation with retinoic acid, favoring non-LMC cervical MN fates. However, the *HoxcΔ5|6* mutation induces the expression of both *Raldh2* and *Foxp1* (Fig. 2A). On the other hand, the *HoxaΔ5|6* mutation fails to induce *Raldh2* or *Foxp1* above the wild-type control (Fig. 2A). To confirm that the *HoxcΔ5|6*-specific phenotype is due to an increase in the percentage of MNs that have achieved a caudal identity, we quantified across all cell lines the fraction of *Isl1|2*-positive MNs that induce *Foxp1*. While only 11.9% ± 0.3% of wild-type and 12.6% ± 1.5% of *HoxaΔ5|6* *Isl1|2*-positive MNs express *Foxp1*, the fraction of *Foxp1*-expressing MNs is significantly increased to 22.4% ± 1.2% in the *HoxcΔ5|6* mutant (Fig. 2B,C). Arguing that this phenotype is secondary to *Hoxc6* activation, transgenic overexpression of *Hoxc6* on a wild-type background (inducible *Hoxc6* [*iHoxc6*] cell line) during differentiation phenocopies the *HoxcΔ5|6* mutant by up-regulating *Raldh2* and *Foxp1* and increasing the fraction of *Foxp1*-expressing MNs to 26.0% ± 1.0% (Fig. 2A–C). The difference between the CTCF mutant lines in the *HoxA* and *HoxC* cluster is consistent with published data suggesting that *Hoxc6*, rather than *Hoxa6*, specifically regulates *Foxp1* expression in MNs (Lacombe et al. 2013). In summary, the deletion of a CTCF-dependent local topological boundary within the *HoxC* cluster disrupts its organization such

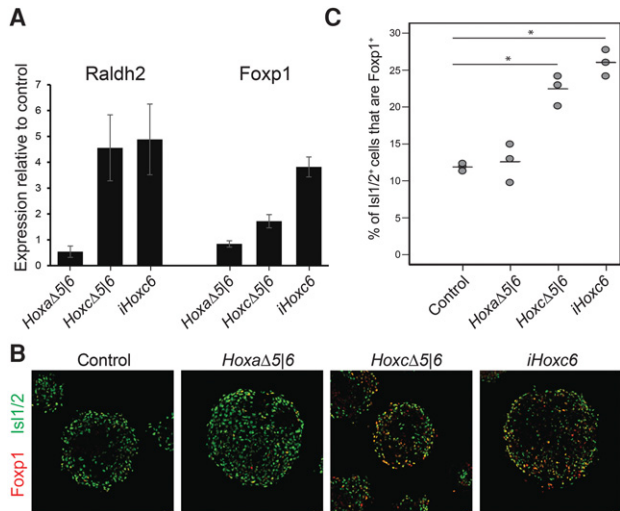


Figure 2. CTCF boundaries regulate the positional identity of MNs. (A) RT-qPCR analysis of expression levels of LMC markers (*Raldh2* and *Foxp1*) in *HoxaΔ5|6*, *HoxcΔ5|6* as well as *Hoxc6*-overexpressing (*iHoxc6*) cell lines relative to the wild-type control. Expression levels from five different biological replicates were normalized to the expression levels of a generic MN marker (*Chat*) to account for differences in MN numbers between different lines. (B) Representatives of differentiated embryoid bodies from control, *HoxaΔ5|6*, *HoxcΔ5|6*, and *Hoxc6*-overexpressing (*iHoxc6*) cell lines stained by the MN marker *Isl1|2* and the LMC transcription factor *Foxp1*. (C) Quantification of *Foxp1* expression in *Isl1|2*-expressing MNs in three independent differentiations \pm SEM. (*) $P < 0.005$, one-tailed unpaired *t*-test.

that ectopic *Hoxc6* expression induces a homeotic transformation-like phenotype even under very restricted *in vitro* differentiation conditions.

While the topological organization of the *Hox* clusters plays a critical role in the establishment of positional identity in ESC-derived MNs, whether this principle generalizes to the wide array of developmental processes that occur *in vivo* is unknown. Nested *Hox* expression patterns the mesoderm-derived axial skeleton along the rostro-caudal axis (Garcia-Gasca and Spyropoulos 2000; McIntyre et al. 2007). Thus, we tested the CTCF-demarcated TAD boundaries within the *HoxA* and *HoxC* clusters for their input into skeletal patterning during embryonic development. To generate precise deletions of CTCF elements within the *Hox* clusters, we first performed zygotic injections of Cas9 mRNA and guide RNAs (gRNAs) targeting both the a5|6 and a7|9 motifs. Implantation of the resulting embryos into a pseudopregnant mouse produced a pup harboring 7-base-pair (bp) and 2-bp deletions *in cis* within the a5|6 and a7|9 motifs, respectively (*HoxaΔ5|6|7|9*) (Fig. 3A). Separately, zygotes were injected with a gRNA targeting the c5|6 motif, resulting in

two heterozygous genotypes: one harboring a 76-bp deletion across the motif and another harboring a 12-bp deletion (*HoxcΔ5|6*) (Fig. 3A). Upon adulthood, these heterozygous mice were then crossed, producing wild-type/wild-type, 12-bp/wild-type heterozygous, 76-bp/wild-type heterozygous, 12-bp/76-bp homozygous, 12-bp/12-bp homozygous, or 76-bp/76-bp homozygous offspring. Postnatal day 0.5 (P0.5) neonates from this cross were dissected and stained with Alcian blue and Alizarin red to reveal their underlying axial skeletal distribution. Wild-type mice have seven cervical, 13 thoracic, six lumbar, and four sacral vertebrae, and transitions between these segments are regulated by *Hox* genes. *In vivo*, every analyzed *HoxcΔ5|6* heterozygous (*HoxC^{+/Δ}*) and homozygous (*HoxC^{Δ/Δ}*) mouse exhibits a C7-to-T1 posterior homeotic transformation at the cervicothoracic boundary within the axial skeleton (Fig. 3B,C). This finding demonstrates a clear developmental defect associated with the disruption of a topological boundary. In these mice, an extra rib protrudes from the C7 position and forms a proper costochondral joint with cartilage arising from the sternum. Importantly, the total number of vertebrae is unchanged relative to wild type, consistent with the length of the rostro-caudal axis being normal. Similarly, the inter-TAD *HoxaΔ5|6|7|9* mutation results in a skeletal patterning defect, albeit at the thoracolumbar transition. Here, proper ribs do not protrude from the T13 position. This phenotype occurs with variable expressivity, presenting as unilateral or bilateral agenesis or shortened ribs, and occurs with 76% penetrance in homozygous mice (*HoxA^{Δ/Δ}*) (Fig. 3B,C). This is opposite to that observed in *Hoxa9* knockout mice, in which an extra rib protrudes from the L1 position, arguing that it is most likely the result of

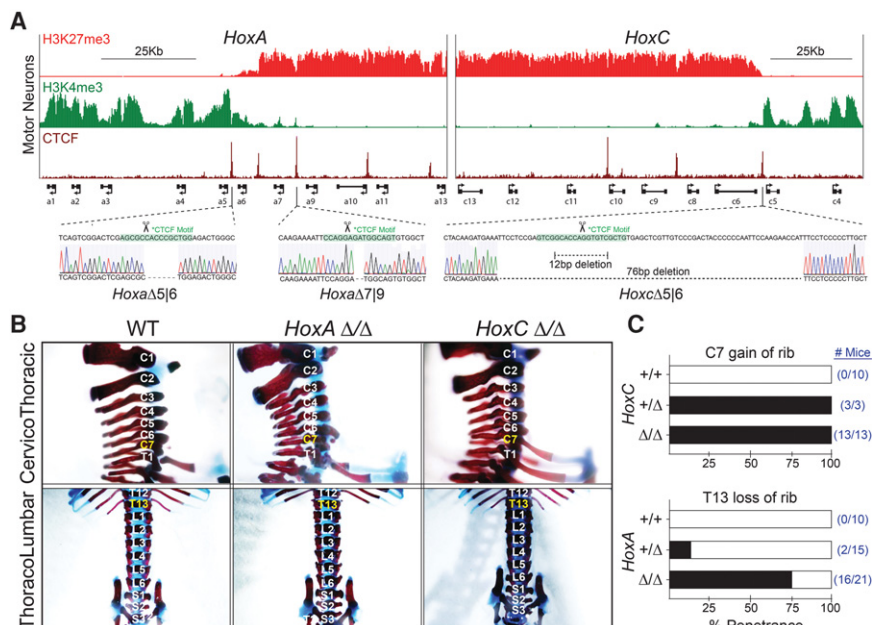


Figure 3. CTCF-delimited TAD boundaries correspond to boundaries in axial-skeletal patterning *in vivo*. (A) ChIP-seq tracks for the indicated proteins across the *HoxA* (left) and *HoxC* (right) clusters and sequencing chromatograms of CTCF-binding site deletions (bottom). ChIP-seq is from GSE60232 (Narendra et al. 2015). (B) Representative Alcian blue–Alizarin red stain of P0.5 pups in *HoxaΔ5|6|7|9* and *HoxcΔ5|6* homozygous animals (*HoxA^{Δ/Δ}* and *HoxC^{Δ/Δ}*, respectively). (C) Phenotypic penetrance in the indicated genetic backgrounds. Raw numbers are presented in blue.

altered rostral spatiotemporal activation of *Hoxa9* in the setting of CTCF ablation. These findings agree with loss-of-function studies that have shown that *Hoxc6* and *Hoxa9* function at the cervicothoracic and thoracolumbar transitions, respectively (Garcia-Gasca and Spyropoulos 2000; Dasen et al. 2003; McIntyre et al. 2007). Thus, changing the accessibility of *Hox* genes to regulatory elements during embryonic development by deleting CTCF sites located both within and at the boundary of topological domains results in a profound misregulation of *Hox* gene expression and leads to homeotic transformations.

Mutations in CTCF-binding sites alter not only the three-dimensional structure of the genome but also the regulation of gene expression (Mazzoni et al. 2013; Guo et al. 2015; Narendra et al. 2015). Studies on the developmental relevance of TADs *in vivo* have used multikilobase to megabase length deletions that disrupt TAD organization (Lupiáñez et al. 2015). The results presented here demonstrate that precise CTCF-binding elements lay the molecular framework on which TAD and sub-TAD structures form. Genetic perturbation of this framework has profound effects on gene regulation and development even when studied within the context of a highly redundant system like *Hox* gene-dependent patterning. We show that deletion of a single CTCF-binding event within the *HoxC* cluster is sufficient to drive differentiating MNs toward an altered caudal cell fate. Importantly, this mode of regulation extends to the complex setting of embryonic development; CTCF-binding site deletions at TAD and sub-TAD boundaries within the *HoxA* or *HoxC* clusters, respectively, induce homeotic transformations in mice, substantiating the importance of these topological regulatory elements in developmental gene expression.

Relocating a gene or genomic segment from one side of a topological boundary to the other dramatically changes its regulatory associations and thus transcriptional output (Hnisz et al. 2016; Neijts et al. 2016). We propose that a subset of CTCF elements is poised to function as TAD boundaries in all cell types, yet their capacity for insulation can be modulated in a cell type-specific manner. This flexibility—as evident by the example of *Hox* clusters—can facilitate the rearranging regulatory landscapes that evolve during development. CTCF binding is stable along the *Hox* clusters during differentiation, yet interior CTCF sites acquire a TAD boundary function by both forming new long-range looping interactions and strengthening existing contacts, specifically as they differentiate into MNs. We propose that this cell type-specific modulation in CTCF-mediated boundary activity appears to be responsive to the local chromatin environment. In undifferentiated cells, the insulating capacity of CTCF-mediated loops is overridden by self-assembling polycomb domains. Upon differentiation, *Hox* clusters are compartmentalized into active and repressed domains, allowing a CTCF-mediated looping framework to shape regulatory contacts. Such regulation draws attention to the remarkable and dynamic customization of genome partitioning inherent in the timely progression of gene regulation during normal development.

Materials and methods

Cell culture and MN differentiation

ESCs were grown in standard ESC medium containing Lif, 1 μ M MEK1/2 inhibitor (PD0325901), and 3 μ M GSK3 inhibitor (CHIR99021). ESC differ-

entiation was described previously (Wichterle et al. 2002). See the Supplemental Material for a detailed protocol.

Expression analysis

RNA was purified from cells with TRIzol (Invitrogen). RT-PCR was performed (Invitrogen) in replicate on 300 ng of total RNA followed by qPCR using a SYBR Green master mix (Thermo Scientific).

Preparation of 5C libraries

5C was performed as described by Dostie and Dekker (2007). Two biological replicates were processed separately. See the Supplemental Material for a detailed protocol.

CRISPR zygotic injection

HoxA and *HoxC* mutant mice were generated by zygotic injection (Yang et al. 2014). Detailed methods are in the Supplemental Material.

Alcian blue–Alizarin red staining

P0.5 neonates were dissected by removing the skin and organs completely. Specimens were fixed for 24 h in 100% ethanol with rocking at room temperature. Ethanol was replaced with Alcian blue stain (0.03% Alcian blue, 80% ethanol, 20% acetic acid) for 24 h with rocking at room temperature. Embryos were fixed again for 6 h in ethanol and transferred to 2% KOH solution for 12–24 h. Any residual skin or tissue was removed at this point. The specimen was subsequently stained with Alizarin red solution (0.03% Alizarin red, 1% KOH in water) for 12–24 h. The skeleton was then further cleared in 1% KOH/20% glycerol and then 1:1 glycerol: ethanol. For long-term storage, embryos were transferred to 4:1 glycerol: ethanol.

Immunocytochemistry

Embryoid bodies and MNs were fixed with 4% (v/v) paraformaldehyde in phosphate-buffered saline. Embryoid bodies were then embedded in OCT (Tissue-Tek) and sectioned for staining. Staining was performed by incubating for 16 h at 4°C for primary antibodies and 1 h at 20°C–25°C for secondary antibodies. After staining, samples were mounted with Fluoroshield with DAPI (Sigma). Images were acquired with a SP5 Leica confocal microscope. We used antibodies to Isl1/2 (from Developmental Studies Hybridoma Bank) and Foxp1 (a gift from J. Dasen, New York University). Alexa 488 (A-11029 and A-11015) and Alexa 568 (A-11036) secondary antibodies were used (Life Technologies, 1:2000).

Accession numbers

All sequencing data have been deposited to the Gene Expression Omnibus as GSE83124.

Acknowledgments

We thank Dr. Lynne Vales, Dr. Jane Skok, Dr. Jeremy Dasen, Dr. Sheng-jiang Tu, Dr. Alejandro Rojas, Dr. Pedro Rocha, Dr. Ricardo Saldaña-Meyer, Dr. Deneen Wellik, Dr. Cynthia Loomis, and members of the Reinberg and Mazzoni laboratories for thoughtful discussions and revision of the manuscript. We also thank Dr. Hynek Wichterle for helping to construct the *iHoxc6* line, Deborah Hernandez for help with mice, the New York University Genome Technology Center for help with sequencing, and the New York University Rodent Genetic Engineering Core for help with generating the mice. This work was supported by grants from the Howard Hughes Medical Institute and the National Institutes of Health (GM-64844 to D.R., T32 GM007238 to V.N., HG003143 to J.D., and R01HD079682 to E.O.M.).

References

- Beuchle D, Struhl G, Muller J. 2001. Polycomb group proteins and heritable silencing of *Drosophila* Hox genes. *Development* **128**: 993–1004.
- Crane E, Bian Q, McCord RP, Lajoie BR, Wheeler BS, Ralston EJ, Uzawa S, Dekker J, Meyer BJ. 2015. Condensin-driven remodelling of X chromosome topology during dosage compensation. *Nature* **523**: 240–244.
- Dasen JS, Liu JP, Jessell TM. 2003. Motor neuron columnar fate imposed by sequential phases of Hox-c activity. *Nature* **425**: 926–933.
- Dasen JS, De Camilli A, Wang B, Tucker PW, Jessell TM. 2008. Hox repertoires for motor neuron diversity and connectivity gated by a single accessory factor, FoxP1. *Cell* **134**: 304–316.
- Dekker J, Mirny L. 2016. The 3D genome as moderator of chromosomal communication. *Cell* **164**: 1110–1121.
- Dekker J, Marti-Renom MA, Mirny LA. 2013. Exploring the three-dimensional organization of genomes: interpreting chromatin interaction data. *Nat Rev Genet* **14**: 390–403.
- Dixon JR, Selvaraj S, Yue F, Kim A, Li Y, Shen Y, Hu M, Liu JS, Ren B. 2012. Topological domains in mammalian genomes identified by analysis of chromatin interactions. *Nature* **485**: 376–380.
- Dostie J, Dekker J. 2007. Mapping networks of physical interactions between genomic elements using 5C technology. *Nat Protoc* **2**: 988–1002.
- Duboule D. 2007. The rise and fall of Hox gene clusters. *Development* **134**: 2549–2560.
- Garcia-Gasca A, Spyropoulos DD. 2000. Differential mammary morphogenesis along the anteroposterior axis in Hoxc6 gene targeted mice. *Dev Dyn* **219**: 261–276.
- Guo Y, Monahan K, Wu H, Gertz J, Varley KE, Li W, Myers RM, Maniatis T, Wu Q. 2012. CTCF/cohesin-mediated DNA looping is required for protocadherin α promoter choice. *Proc Natl Acad Sci* **109**: 21081–21086.
- Guo Y, Xu Q, Canzio D, Shou J, Li J, Gorkin DU, Jung I, Wu H, Zhai Y, Tang Y, et al. 2015. CRISPR inversion of CTCF sites alters genome topology and enhancer/promoter function. *Cell* **162**: 900–910.
- Hnisz D, Weintraub AS, Day DS, Valton AL, Bak RO, Li CH, Goldmann J, Lajoie BR, Fan ZP, Sigova AA, et al. 2016. Activation of proto-oncogenes by disruption of chromosome neighborhoods. *Science* **351**: 1454–1458.
- Lacombe J, Hanley O, Jung H, Philippidou P, Surmeli G, Grinstein J, Dasen JS. 2013. Genetic and functional modularity of Hox activities in the specification of limb-innervating motor neurons. *PLoS Genet* **9**: e1003184.
- Lonfat N, Duboule D. 2015. Structure, function and evolution of topologically associating domains (TADs) at HOX loci. *FEBS Lett* **589**: 2869–2876.
- Lonfat N, Montavon T, Darbellay F, Gitto S, Duboule D. 2014. Convergent evolution of complex regulatory landscapes and pleiotropy at Hox loci. *Science* **346**: 1004–1006.
- Lupiáñez DGG, Kraft K, Heinrich V, Krawitz P, Brancati F, Klopocki E, Horn D, Kayserili H, Opitz JM, Laxova R, et al. 2015. Disruptions of topological chromatin domains cause pathogenic rewiring of gene-enhancer interactions. *Cell* **161**: 1012–1025.
- Maeda RK, Karch F. 2009. The bithorax complex of *Drosophila*: an exceptional Hox cluster. *Curr Topics Dev Biol* **88**: 1–33.
- Mazzoni EO, Mahony S, Peljto M, Patel T, Thornton SR, McCuine S, Reeder C, Boyer LA, Young RA, Gifford DK, et al. 2013. Saltatory remodeling of Hox chromatin in response to rostrocaudal patterning signals. *Nat Neurosci* **16**: 1191–1198.
- McIntyre DC, Rakshit S, Yallowitz AR, Loken L, Jeannotte L, Capocchi MR, Wellik DM. 2007. Hox patterning of the vertebrate rib cage. *Development* **134**: 2981–2989.
- Montavon T, Soshnikova N, Mascrez B, Joye E, Thevenet L, Splinter E, de Laat W, Spitz F, Duboule D. 2011. A regulatory archipelago controls Hox genes transcription in digits. *Cell* **147**: 1132–1145.
- Narendra V, Rocha PP, An D, Raviram R, Skok JA, Mazzoni EO, Reinberg D. 2015. CTCF establishes discrete functional chromatin domains at the Hox clusters during differentiation. *Science* **347**: 1017–1021.
- Neijts R, Amin S, van Rooijen C, Tan S, Creighton MP, de Laat W, Deschamps J. 2016. Polarized regulatory landscape and Wnt responsiveness underlie Hox activation in embryos. *Genes Dev* **30**: 1937–1942.
- Nora EP, Lajoie BR, Schulz EG, Giorgetti L, Okamoto I, Servant N, Pilot T, van Berkum NL, Meisig J, Sedat J, et al. 2012. Spatial partitioning of the regulatory landscape of the X-inactivation centre. *Nature* **485**: 381–385.
- Rao SS, Huntley MH, Durand NC, Stamenova EK, Bochkov ID, Robinson JT, Sanborn AL, Machol I, Omer AD, Lander ES, et al. 2014. A 3D map of the human genome at kilobase resolution reveals principles of chromatin looping. *Cell* **159**: 1665–1680.
- Rouso DL, Gaber ZB, Wellik D, Morrisey EE, Novitsch BG. 2008. Coordinated actions of the forkhead protein Foxp1 and Hox proteins in the columnar organization of spinal motor neurons. *Neuron* **59**: 226–240.
- Tang Z, Luo OJ, Li X, Zheng M, Zhu JJ, Szalaj P, Trzaskoma P, Magalska A, Wlodarczyk J, Rusczycki B, et al. 2015. CTCF-mediated human 3D genome architecture reveals chromatin topology for transcription. *Cell* **163**: 1611–1627.
- Vieux-Rochas M, Fabre PJ, Leleu M, Duboule D, Noordermeer D. 2015. Clustering of mammalian Hox genes with other H3K27me3 targets within an active nuclear domain. *Proc Natl Acad Sci* **112**: 4672–4677.
- Wichterle H, Lieberam I, Porter JA, Jessell TM. 2002. Directed differentiation of embryonic stem cells into motor neurons. *Cell* **110**: 385–397.
- Yang H, Wang H, Jaenisch R. 2014. Generating genetically modified mice using CRISPR/Cas-mediated genome engineering. *Nat Protoc* **9**: 1956–1968.



CTCF-mediated topological boundaries during development foster appropriate gene regulation

Varun Narendra, Milica Bulajic, Job Dekker, et al.

Genes Dev. 2016 30: 2657-2662

Access the most recent version at doi:[10.1101/gad.288324.116](https://doi.org/10.1101/gad.288324.116)

Supplemental Material <http://genesdev.cshlp.org/content/suppl/2017/01/04/gad.288324.116.DC1.html>

References This article cites 30 articles, 9 of which can be accessed free at:
<http://genesdev.cshlp.org/content/30/24/2657.full.html#ref-list-1>

Creative Commons License This article is distributed exclusively by Cold Spring Harbor Laboratory Press for the first six months after the full-issue publication date (see <http://genesdev.cshlp.org/site/misc/terms.xhtml>). After six months, it is available under a Creative Commons License (Attribution-NonCommercial 4.0 International), as described at <http://creativecommons.org/licenses/by-nc/4.0/>.

Email Alerting Service Receive free email alerts when new articles cite this article - sign up in the box at the top right corner of the article or [click here](#).

To subscribe to *Genes & Development* go to:
<http://genesdev.cshlp.org/subscriptions>
